

General Purpose Flanged Solenoid Valves S1072 / S1082 Series

GENERAL FEATURES

- New design
- Full orifice flanged solenoid valves
- 3", 4", 6" and 8" connection
- TORK series S1072 (N.O) and S1082 (N.O) diaphragm solenoid valves are 2/2 way normally closed and pilot operated
- Suitable for water and air.
- Working Temperature: -20°C / +80°C
- Not suitable for use with dangerous fluids listed in Group 1
- Minimum operating differential pressure 1 and 1,5 bar
- High reliability, quality and performance; long life. corrosion resistance
- Wide pressure ratings, range of flow rate and orifice options
- Coils interchangeable
- Flow factor Kv of each valve is indicated, so that the flow Q can be calculated as a function of pressure
- Solenoid valves must be used with filtered fluids.
- Solenoid valve can be mounted in any position without affecting operation; vertical with coil upwards preferred.
- Standard pipe connection is G (BSP) (ISO 228-1) and on request; other pipe connections are available (NPT (ANSI 1.20.3))

ELECTRICAL CHARACTERISTICS

Continuous Duty	: ED %100
Coil Insulation Class	: H (180°C)
Coil Impregnation	: Polyester Fiber Glass
Coil Encapsulation Material	: Fiber Glass Reinforced
Ambient Temperature	: from -20°C, +60°C
Protection Degree	: IP65 (ISO 60529) with coil duly fitted with the plug connector
Electric Plug Connection	: DIN 46340 3 - Poles Connector (DIN43650)
Connector Specification	: ISO 4400 / EN 175301-803 Form A, Spade Plug (Cable Ø6-8 mm)
Electrical Safety	: IEC 335
Standard Voltages	: For AC 12V, 24V, 48V, 110V, 230V For DC 12V, 24V, 48V, 110 V

On request other voltages
 Voltages Tolerance : For AC -15%; +10%, For DC -5%; +10%
 Frequency : 50 Hz, other frequencies on request; (60 Hz ...)
 On request; connector with LED
 Specify coil volt age with order

MATERIALS IN CONTACT WITH FLUID

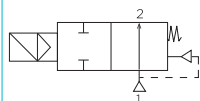
Body	: Cast Iron
Internal Parts	: Stainless Steel, Brass
Sealing	: NBR
Shading Ring	: Copper (EN 12735-1)
Seats	: Brass
Core Tube	: Stainless Steel
Springs	: Stainless Steel

OPTIONS

- Female connection: BSP; (On request NPT)
- On request Atex (exproof) coil.

TECHNICAL FEATURES

Max. Viscosity	: 5°E (-37cST veya mm²/s)
Response Time	:
Opening Time	: 400 ms- 1600 ms
Closing Time	: 1000 ms- 2000 ms



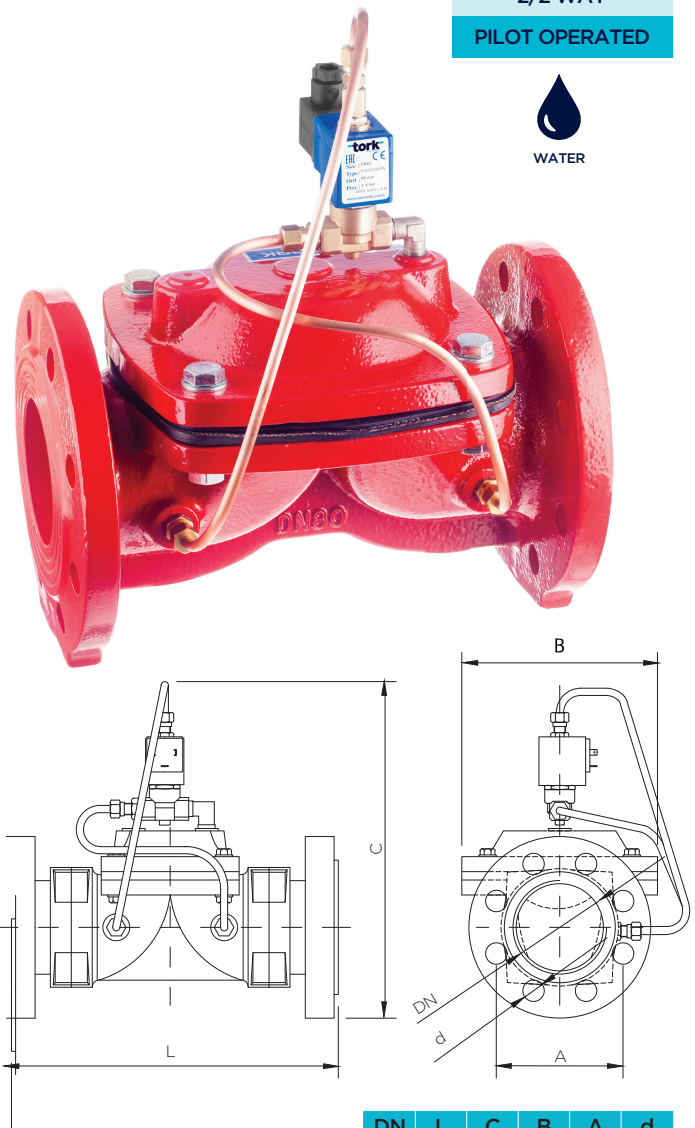
NORMALLY OPEN

2/2 WAY

PILOT OPERATED



WATER



DN	L	C	B	A	d
65	214	320	200	145	18
80	288	340	208	160	18
100	305	365	208	180	18
150	403	450	300	240	22
200	490	550	385	295	22

Solenoid Valve Symbol	Valve Type/ Order No	Connection Size	Pressure min/max		Kv	Fluid Temperature		Seal	Weight
			Bar	Bar		min	max		
	S1072 / S1082	DN	Bar	Bar	m3/h	°C			
	S1072.09	65	1	6	50	-20	80	NBR	9.63
	S1072.10	80	1	6	130	-20	80	NBR	15.77
	S1072.12	100	1	6	200	-20	80	NBR	17.63
	S1072.18	150	1	6	450	-20	80	NBR	44.5
	S1072.20	200	1	6	800	-20	80	NBR	69
	S1082.09	65	3.7	16	50	-20	80	NBR	9.63
	S1082.10	80	1.6	16	130	-20	80	NBR	15.77
	S1082.12	100	1.6	16	200	-20	80	NBR	17.63
	S1082.18	150	1.6	16	450	-20	80	NBR	44.5
S1082.20	200	2	16	800	-20	80	NBR	69	