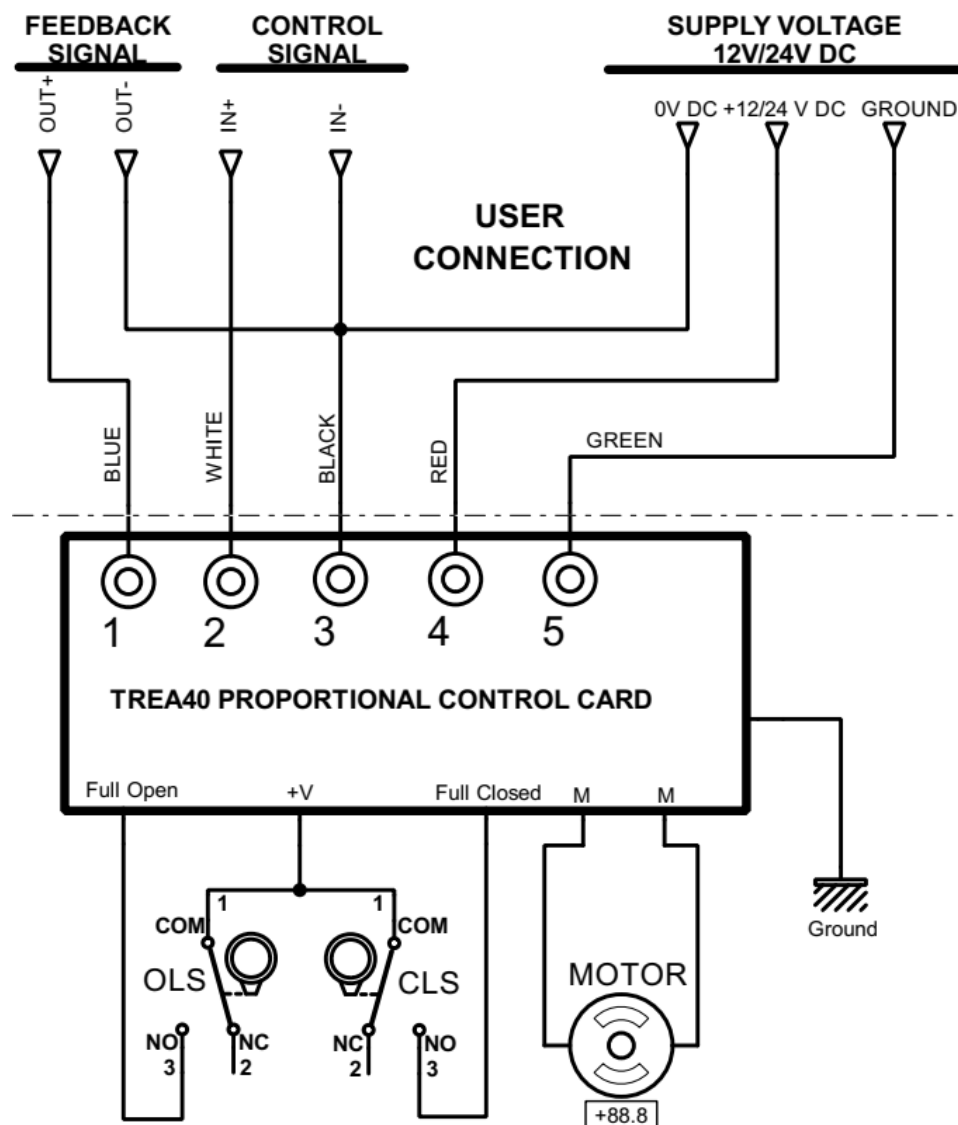


## TREA40 12- 24V DC PROPORTIONAL CONTROLLED ELECTRIC ACTUATOR WIRING DIAGRAM

[illegible]

## WARNINGS

**Each actuator must be connected through its own switch and relay contacts to avoid cross-feeding.  
Supply voltage, control signal and output signal's GND lines are common.**

TREA 0040	DOCUMENT NO:
	PREPARED BY DEP: AR-GE
12V DC 24V DC	DATE: 10.10.2023

**SMS Sanayi Malzemeleri Satışı ve Üretim A.Ş**