

Pulse Valves - PL 1060 SERİSİ (G3/4", G1", G1 1/2")

GENERAL FEATURES

- The pulse valves are especially used for dust collector service application or similar systems.
- Compact design, high reliability, flow rate, quality and performance; long life.
- Extremely fast opening and closing
- On request; with electronic timer
- Some application; dust filters, bunkers, dust extractors, electrostatic painting cabinets.
- Coils interchangeable
- Pulse valves must be used with filtered fluids.

ELECTRICAL CHARACTERISTICS

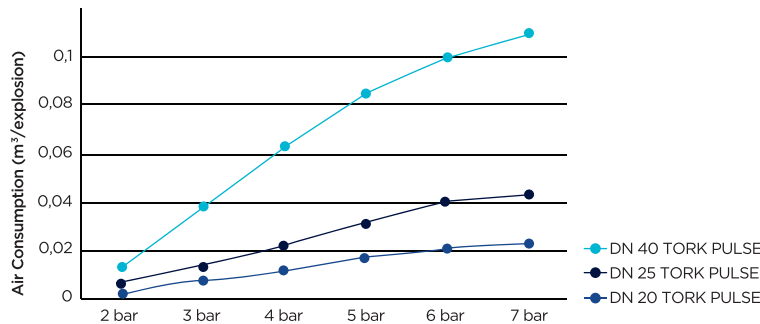
Continuous Duty : ED %100
Coil Insulation Class : H (180°C)
Coil Impregnation : Polyester Fiber Glass
Ambient Temperature : -20°C ... 80°C
Protection Degree : IP65 (ISO 60529) On request IP68
Electric Plug Connection : DIN 46340 3- Poles Connector(DIN43650)
Connector Specification : ISO 4400 / EN 175301-803 Form A, Spade Plug (Cable Ø6-8 mm)
Electrical Safety : IEC 335
Standard Voltages : AC 12 V, 24V, 48 V, 110V, 230 V
DC 12 V, 24V, 48 V, 110V

On request other voltages
Voltages Tolerance : ± % 10
Frequency : 50 / 60 Hz On request; LED connectors
Please, specify coil voltage with order.

MATERIALS IN CONTACT WITH FLUIDS

Body : Aluminium
Internal Parts : Stainless Steel
Sealing : NBR
Shading Ring : Copper
Seats : Aluminium
Core, Tube : Stainless Steel
Spring : Stainless Steel
Response Time : Opening Time : 100 ms
Closing Time : 100 ms

G1" Pulse valve air consumption example
Pressure: 6 Bar; 50 cycle/hr
G1" Pulse valve air consumption at 6 bar can be seen as 0,43 m3/sn from the table.
For 50 cycle/hr, total air consumption is 0,043 x 50: 2,15 m3/h



NORMALLY CLOSED

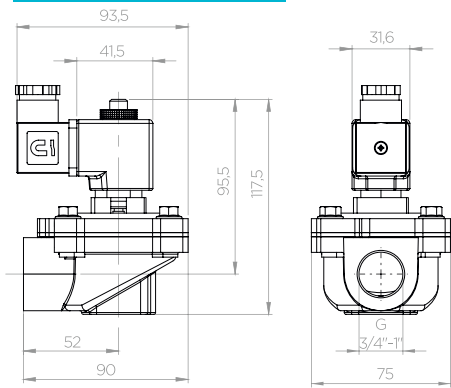
2/2 WAY

PILOT OPERATED

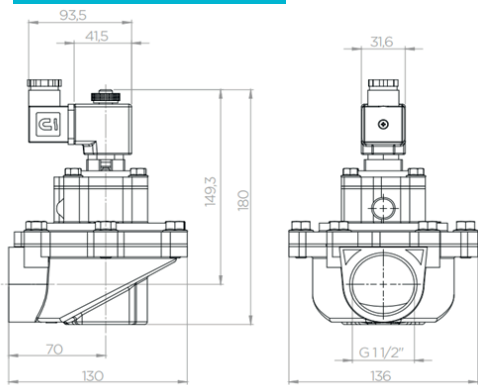
AIR

PL1060

3/4" ve 1" Dimension



1 1/2" Dimension



Valve Order No	Connection Size	Orifice Size	Pressure		Kv	Fluid Temperature		Sealing	Weight
			min	max		min	max		
PL1060	G	mm	bar		Lt/min	°C			(kg)
PL1060.04	3/4"	25	0,5	3	150	-10	80	NBR	0,69
PL1060.05	1"	30	0,5	3	270	-10	80	NBR	0,68
PL1060.07	1 1/2"	44	0,5	3	774	-10	80	NBR	1,4

• TORK Pulse Valves comply with 97/23 / EC, Pressure Equipment Directive (PED) and Low Voltage Directive 2006/95 / EEC.
• Standard pipe connection GIBSP (ISO 228-1) is available on request. Other pipe connections can also be made on request. ((NPT) ANSI 1, 20, 31)