

Plate Type Push Button Solenoid Valves

S1058 Series



- NORMALLY CLOSED • 3/2 WAY
- DIRECT ACTING

General Features

- TORK serie S1058 solenoid valves are 3/2 way direct acting
- High reliability, quality and performance; long life, corrosion resistance.
- TORK solenoid valves satisfy relevant 97 /23/EC, Pressure Equipment
- Directive (PED) and 2006/95/EEC Low Voltage Directive (LVD) Coils interchangeable.
- Flow factor Kv of the valve is indicated, so that the flow Q can be calculated as a function of pressure.
- Solenoid valves must be used with filtered fluids.
- Solenoid valve can be mounted in any position without affecting operation; vertical with coil upwards preferred.

Materials In Contact with Fluid

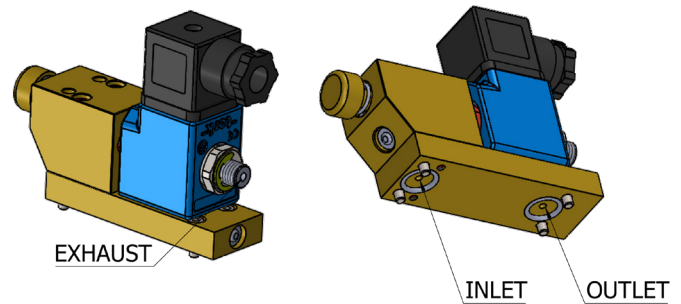
Body	: Brass
Internal Parts	: Stainless Steel
Sealing	: PTFE and FKM

Function

- This solenoid valve is used on pneumatic air starters of industrial engines.
- For safety of the engine and the users, valve has a push button.
- Apart from energizing the coil, valve can also be actuated by pressing the push button.
- By releasing of the push button, valve returns to the closed position and starter stops immediately.
- This valve has its own base plate with bolts which provides mounting opportunity of whole valve over air starter easily.
- Upon request, valve can also be delivered without base plate.

Technical Features

Max. Viscosity	: 5°E (-37cST or m ² m /s)
Response Time	: Opening & Closing Time 30 ms
Operating Pressure	: 5-40 bar
Fluid Temperature	: -20°C to +160°C



Electrical Characteristics

Continuous Duty	: ED %100
Coil Insulation Class	: H (180°C)(IEC 85) B
Coil Impregnation	: Polyester Fiber Glass
Coil Outer Body Material	: Fiber Glass Reinforced
Ambient Temperature	: -20°C, +60°C
Protection Degree	: IP65 (on request IP68)
Electric Plug Connection	: DiN 46340 3-poles connectors (DiN 43650)
Terminal	: Cable Ø6-8 mm
Electrical Safety	: IEC 335
Standard Voltages	: DC 24V, 48V, 72V
Other voltages	: on request
Voltage Tolerance	: For DC -5%; + 10%
On request	: connector with LED
Specify coil voltage	: with order.

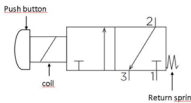
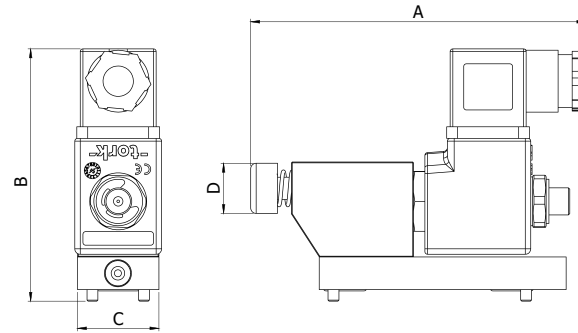
Solenoid Valve Symbol	Valve Type / Order No	Base Plate	Orifice Size	Pressure (bar)	Kv	Seal	Weight
	S1058		mm	min Bar	max Bar	lt/min	kg
	S1058010T-B	✓	1	5	40	0,5	0,86
	S1058010T						0,60

Plate Type Push Button Solenoid Valves

S1058 Series



Dimensions (mm)			
A	B	C	D
123,5	93	30	18,5

Coils & Sockets

- As standard use selected C40 series coil chosen for the appropriate voltage. Coil standard powers are 15VA or 18W. For other power values, please refer to the valve datasheet or contact the company.
- Sockets for C40 coils: C80 - standard socket, C81 - LED socket, C82 and C83- Power Save Socket PWM, C84 - AC to DC socket
- Complete factory assembled valves with coil and socket can be ordered, for that purpose after the valve body code specify the coil and socket, e.g., S1030.03.125.E-C40230VAC24VA-C80 is the S1030.03.125.E valve body with a C40 series coil 230V AC 24VA and C80 socket.
- For IP68 use a C42 series coil (C42 coils are with cable, no additional socket is necessary).
- For use in ATEX zones use a C41, C43, C46 or C47 series coil (All exproof coils are with cable, no additional socket is necessary).
- E in the body code of the valve indicates the sealing element. E for EPDM, V for Viton, N for NBR.
- For details coils and sockets see private datasheets describing these components

C40: Standard Coil

C41: M Type Ex Proof Standard Coil

C42: IP68 Coil

C43: D Type Ex Proof Coil

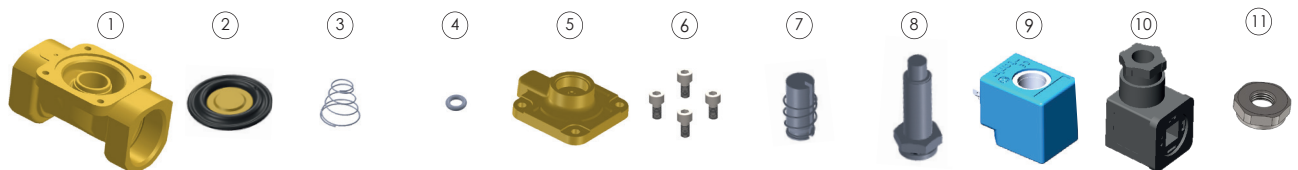
C46: m Type Ex Proof Coil with Thermic Switch

C47: m Type Ex Proof Coil with PWM Control

Spare Parts



No	1	2	3	4	5	6
Part Name	Body	Core	Core Tube	Coil	Socket	Nut



No	1	2	3	4	5	6	7	8	9	10	11
Part Name	Body	Sealing	Spring	O - RING	Cover	Bolts	Core	Core Tube	Coil	Socket	Nut

Standards

- TORK solenoid valves comply with the Pressure Equipment Directive (PED) 97/23/EC and Low Voltage Directive (LVD) 2006/95/ECC.

Product specifications, design and availability are subject to change without notice. All rights reserved.