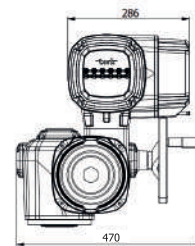
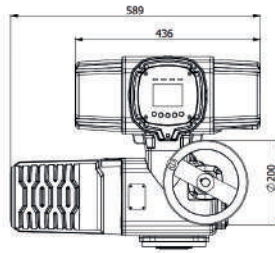
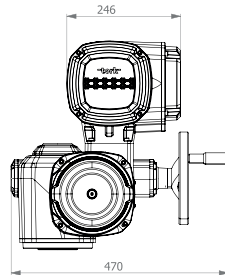
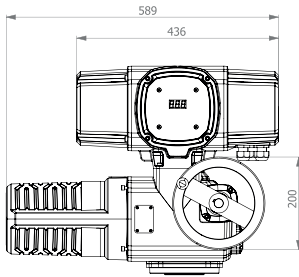




MULTI-TURN ELECTRIC ACTUATOR

**MULTI-TURN ELECTRIC ACTUATOR
TMEA0060-0120**



GENERAL FEATURES

- High-quality aluminum alloy housing, providing a robust and lightweight structure
- Simple and comfortable manual operation with handwheel
- High quality and high performance
- Reliable and long service life
- Easy and user-friendly interface design with color TFT LCD or 3-digit 7-segment display
- Control via magnetic buttons and magnetic pen
- Local and remote control capability
- Supports Turkish and English languages

TECHNICAL FEATURES

Operating Voltage	: 1P 230, 3P 380 VAC 50/60 Hz
Power Consumption	: 60 Nm - 0.75 kW, 120 Nm - 1.5 kW
Operating Temperature	: -20°C ~ +60°C
Humidity	: 0 ~ 95%RH
Operating Speed	: 30 rpm
Duty Cycle	: S2 /30 dk.
Output Torque	: 60 / 120 Nm
Body	: Aluminum alloy
Coating	: Epoxy paint
Handwheel	: Ø200mm
IP Protection	: IP 67 (On request IP68)
Weight	: 48 kg
Flange Connection Dimensions	: F10 - F12

APPLICATION

Energy Sector

- Solar Thermal Power Plants
- Geothermal Power Plants
- Cogeneration Power Plants
- Hydroelectric Power Plants
- Biogas Power Plants
- Coal, Gas and Oil (Fossil Fuel) Power Plants

Oil and Gas Industry

- Pumping Stations
- Refineries
- Offshore Platforms
- Pipelines
- Storage Facilities

Water and Wastewater Management

- Wastewater Treatment Plants
- Water Treatment Plants
- Drinking Water Distribution
- Sewage Disposal

REASONS TO PREFER MULTITURN ACTUATORS

- Operate with standard mains voltage
- Ability to achieve high torque with low energy consumption
- Long service life thanks to their modular and robust structure
- Compact and modular product design
- Precise proportional and on/off control capability
- Remote and local control options
- High protection class for demanding environments

MULTI-TURN ELECTRIC ACTUATOR
TMEA0060-0120

TMEA SERIES MULTITURN ELECTRIC ACTUATORS

Powerful, Precise and Reliable Control for Demanding Industrial Processes

TMEA Series Multiturn Electric Actuators are specially designed for industrial control systems. They deliver outstanding performance in applications that require high torque where manual operation or quarter-turn actuators are insufficient.

By converting motor power into multi-rotation motion, they ensure the most reliable opening and closing operation of your valves.

Application Areas

With its strong mechanical structure, the actuator can easily integrate with various valve and gate systems:

- Penstock Gates
- Flanged Butterfly Valves
- Gate Valves
- Knife Gate Valves
- Globe Valves

Why TMEA Series? Key Features

- High Precision Control: Thanks to its multi-turn opening and closing capability, it provides positioning accuracy of up to 0.5%, making it ideal for processes where precision is critical.
- Wide Power Supply Options: Available in Single Phase (Monophase) and Three Phase (Triphase) versions to suit your facility's electrical infrastructure.
- Extra Durability for Harsh Conditions: Designed to deliver consistent, uninterrupted, and reliable performance for many years, even in the most demanding environmental conditions.

Advanced Protection and Safety Systems

The actuator is equipped with comprehensive protection systems to prevent failures in your valve and control systems

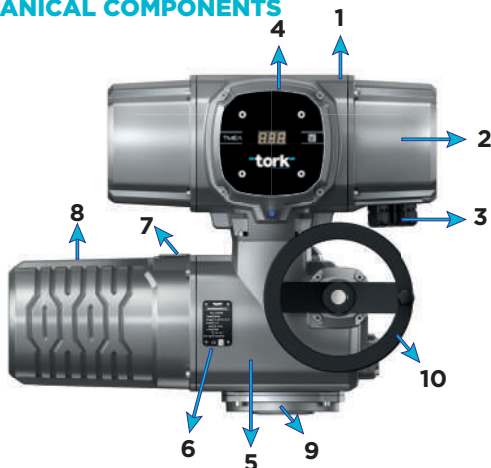
- Over-Torque Detection: Stops the system if the valve becomes jammed during operation, preventing potential mechanical damage.
- Temperature Protection (Thermal Protection): Activates in case of overheating to protect the motor and internal components.

Additional Equipment and Integration: Torque Booster Systems

TMEA Series actuators can work fully integrated with torque increasing (gear reducer) systems recommended by our manufacturer for projects requiring extra high power. These systems, mounted between the valve and the actuator, are offered specifically for each project. During system selection; engineering values such as valve stem diameter, shaft diameter of the torque booster system, and the required maximum torque amount should be taken into consideration.

If needed, the appropriate torque booster equipment can be requested from our company.

MECHANICAL COMPONENTS



DEFINITIONS

- [1] :Upper Body
- [2] :Cable Connection Cover
- [3] :Cable Gland and Plug
- [4] :Display Cover
- [5] :Lower Body
- [6] :Product Label
- [7] :Motor Label
- [8] :Motor Body
- [9] :Valve Connection Flange
- [10] :Handwheel

MULTI-TURN ELECTRIC ACTUATOR
TMEA0060-0120
PERFORMANCE

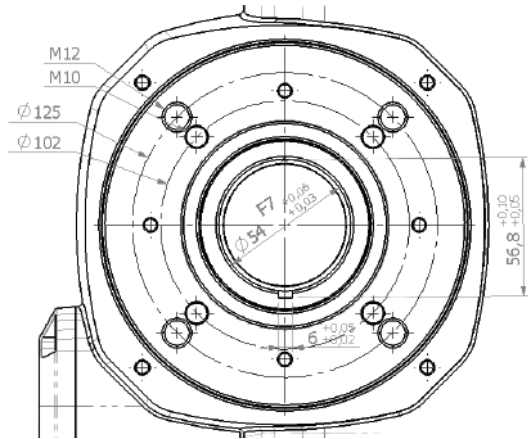
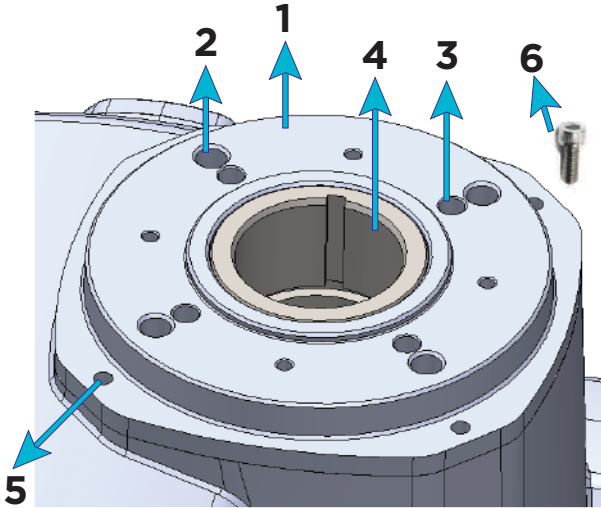
TMEA	Working Voltage	Rpm	Output Torque (N.m)	Current (A)
0060	AC 230V 1 FAZ 50/60Hz	30	60	5.5
0120	AC 230V 1 FAZ 50/60Hz	30	120	5.9
0120	AC 380V 3 FAZ 50/60Hz	30	120	3.2

TECHNICAL FEATURES

FEATURES	DESCRIPTION
Body Material	Aluminum
Body Coating	Epoxy paint Humidity Resistance: >1000 hours / average (ASTM D-1735) Metal Temperature Resistance: Maximum 10 min. at 400 °F
Protection Class	IP 67 (On request IP68)
Operating Voltage	230 VAC 50/60 Hz - 380 VAC 50/60 Hz
Motor	Asynchronous motor S2 / 30 min
Motor Power	60 Nm - 0.75 HP, 120 Nm - 1.5 HP
Gear Lubrication	Grease
Cable Gland Size	5 x M20 x 1.5 mm
Handwheel Size	Ø200 mm
Flange	ISO-5211, F10 / M10 / 102, F12 / M12 / 125
Torque	60 Nm - 120 Nm
Ambient Temperature	-20°C ~ +60°C
Control Type	Remote Control (proportional control, on/off control) Local Control (via handwheel, display buttons)
Control Signals	0/4-20 mA, 0/2-10 mA, 1-5 V, 2-10 V
Display	7-segment display / TFT LCD
Warning Method	Via display, open/close indication via relay contacts
Weight	48 kg

**MULTI-TURN ELECTRIC ACTUATOR
TMEA0060-0120**

FLANGE DIMENSIONS AND VALVE COMPATIBILITY

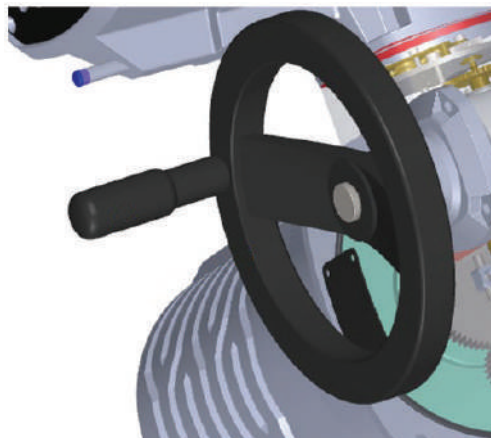
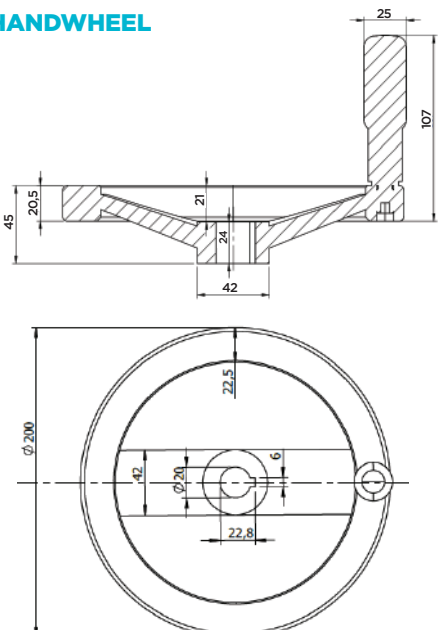


DEFINITIONS

- [1] :Flange (Mounting Base)
- [2] :F12 / M12
- [3] :F10/M10
- [4] :Valve Stem Slot
- [5] :Valve-Actuator Connection Slot
- [6] :Mounting Bolt (M6 x 20 mm INOX)

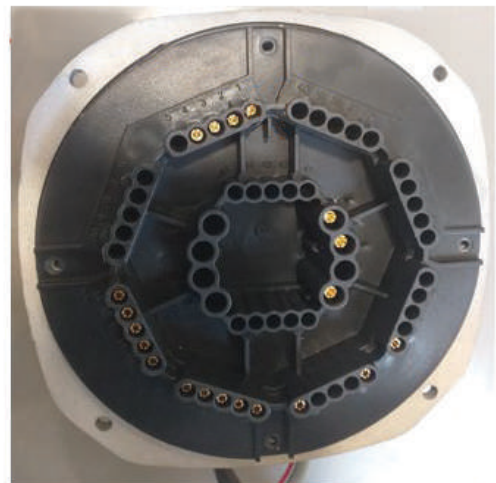
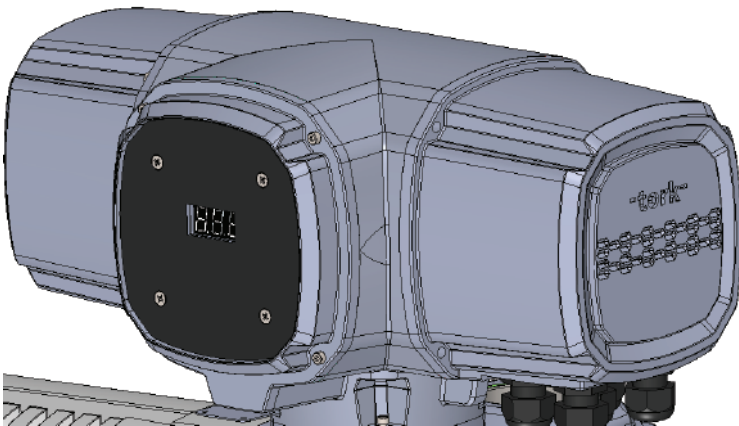
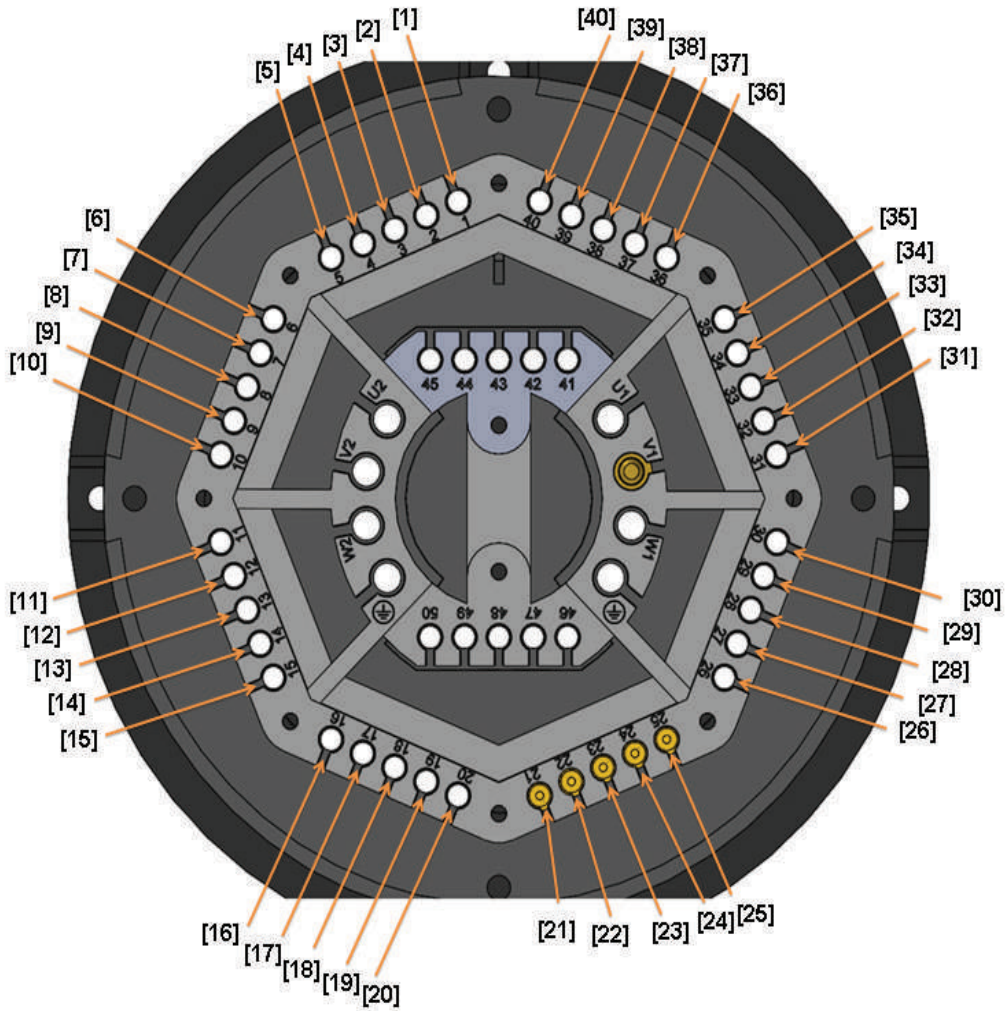
Flange Type ISO 5211	Torque N.m	Flange Center Diameter (mm)	Valve Mounting Bolt	Number of Bolts
F10	60 - 120	102	M10	4
F12	60 - 120	125	M12	4

HANDWHEEL



**MULTI-TURN ELECTRIC ACTUATOR
TMEA0060-0120**

TERMINAL PIN DETAILS



Note: Please refer to the wiring diagrams for terminal connections.

MULTI-TURN ELECTRIC ACTUATOR
TMEA0060-0120

PRODUCT LABEL

It contains the essential technical basic information about the product. In the field, it represents the product's clear identity and specifications. The product must be operated in accordance with the values provided on the label. Using the barcode on the label, access can be provided to our webpage containing the technical information of the product.

tork

TMEA00601P68A

Serial No	TMEA0226 - 01
Torque	60 Nm
Power	0.75 kW
Voltage	1P, 220 VAC, 50/60 Hz
Current	4.5 A
Rpm	30 rpm
Enclosure	IP68
Amb. Temp.	-20°C +60°C
Ctrl Type	Proportional + LCU

www.smstork.com

tork

TMEA00601P68B

Serial No	TMEA0226 - 01
Torque	60 Nm
Power	0.75 kW
Voltage	1P, 220 VAC, 50/60 Hz
Current	4.5 A
Rpm	30 rpm
Enclosure	IP68
Amb. Temp.	-20°C +60°C
Ctrl Type	Proportional

www.smstork.com

tork

TMEA01201P68A

Serial No	TMEA0226 - 01
Torque	120 Nm
Power	1.5 kW
Voltage	1P, 220 VAC, 50/60 Hz
Current	5.5 A
Rpm	30 rpm
Enclosure	IP68
Amb. Temp.	-20°C +60°C
Ctrl Type	Proportional + LCU

www.smstork.com

tork

TMEA01201P68B

Serial No	TMEA0226 - 01
Torque	120 Nm
Power	1.5 kW
Voltage	1P, 220 VAC, 50/60 Hz
Current	5.5 A
Rpm	30 rpm
Enclosure	IP68
Amb. Temp.	-20°C +60°C
Ctrl Type	Proportional

www.smstork.com

tork

TMEA01203P68A

Serial No	TMEA0226 - 01
Torque	120 Nm
Power	1.5 kW
Voltage	3P, 380 VAC, 50/60 Hz
Current	3.3 A
Rpm	30 rpm
Enclosure	IP68
Amb. Temp.	-20°C +60°C
Ctrl Type	Proportional + LCU

www.smstork.com

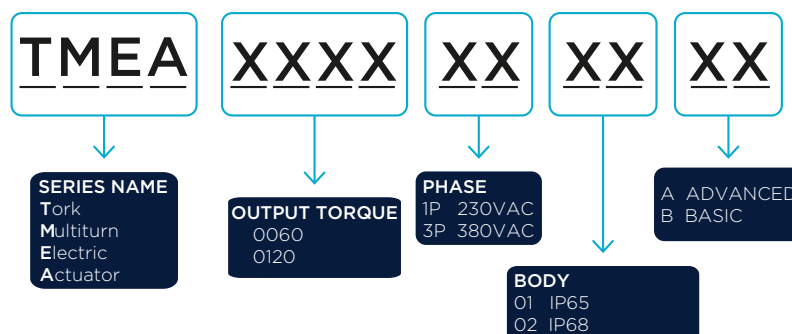
tork

TMEA01203P68B

Serial No	TMEA0226 - 01
Torque	120 Nm
Power	1.5 kW
Voltage	3P, 380 VAC, 50/60 Hz
Current	3.3 A
Rpm	30 rpm
Enclosure	IP68
Amb. Temp.	-20°C +60°C
Ctrl Type	Proportional

www.smstork.com

CODING SYSTEM



tork

valve & automation

Merkez Ofis : Bostancı Yolu Cad. Kuru Sok. No16 Y. Dudullu, 34776 Ümraniye / İstanbul - Türkiye
Fabrika : Çerkeşli OSB Mah. İmes 2. Cad. No.5 41455 Dilovası / Kocaeli - Türkiye

T +90 216 364 34 05 **F** +90 216 364 37 57
T +90 262 290 20 20 **F** +90 262 290 20 21

SMS SANAYİ MALZEMELERİ ÜRETİM VE SATIŞI A.Ş.

[f/SMSTORK](#) [t/sms-tork](#) www.smstork.com