

## MINI MOTORIZED 3 WAY VALVE RMEA-3WS

### Features

- Mini Dimension suits for small equipment
- Patented technology—floating seal structure
- Long service life — 70,000- 100,000 circles
- Low working current, suitable for battery driving
- IP67 Enclosure
- Fail safe function (capacitor return) optional.

### Applications

- HVAC
- Water treatment
- Chemical process
- Small equipment for automatic control
- Replacing solenoid valve, particularly when solenoid cannot work reliably

### Technical Specifications Include

- Valve Type: Three-way electric ball valve
- Sizes: 1/4" to 1" (DN8, DN10, DN15, DN20, DN25)
- Pressure: Maximum 1.0 MPa (PN10)
- Flow: Varies with valve size and application
- Medium Temperature: 0°C to 100°C
- Ambient Temperature: -20°C to 45°C

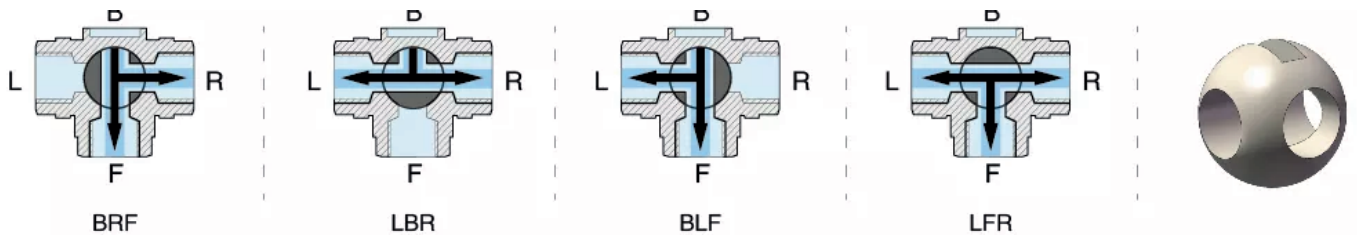


### Technical Parameters

Series	Max Torque	Operating Time	Enclosure	Max. Pressure	Medium Temperature	Ambient Temperature	Humidity
RMEA-3WS	2 Nm	about 5S	IP67	1.0Mpa	0-100°C	-20 °C < t < 45 °C	≤85% non-condensing

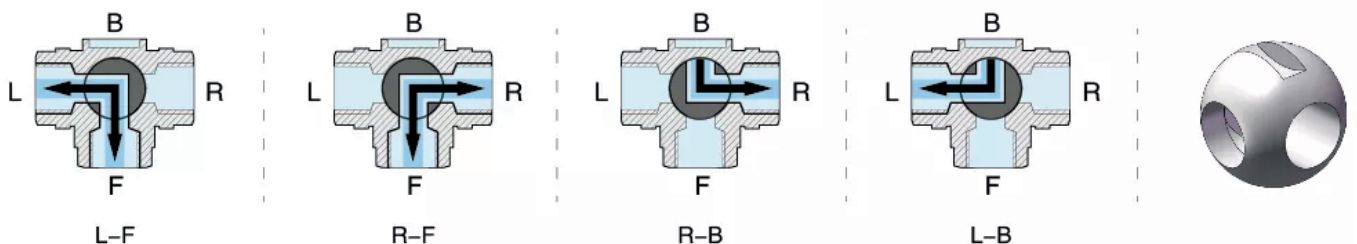
### Flow Direction

#### T Port



\*2,3 or 4 flow direction above is optional and water mixing occurs during the rotation process.

#### L Port

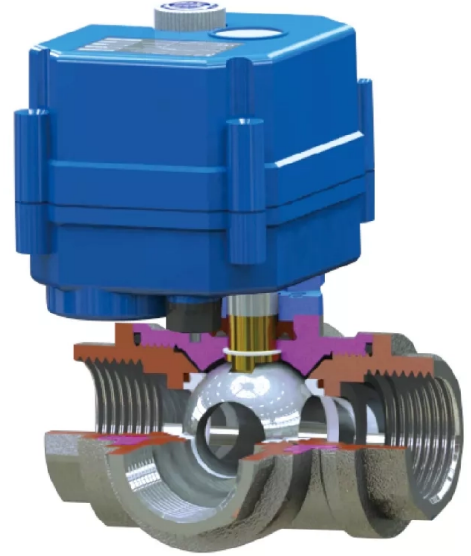


\*2,3 or 4 flow direction above is optional and water mixing occurs during the rotation process.

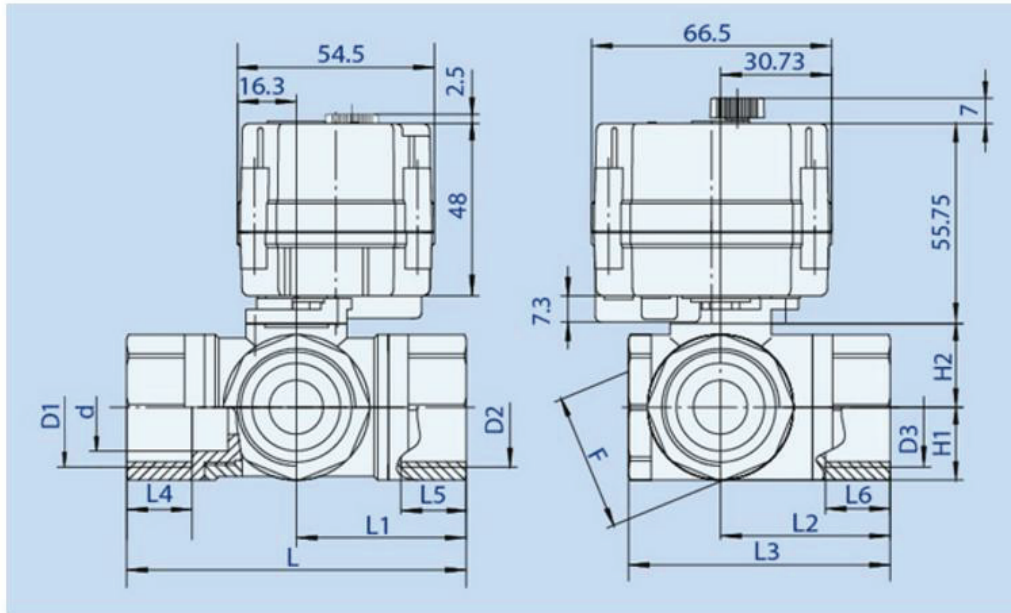
## MINI MOTORIZED VALVE RMEA-3WS

### Main Components

No	Description	Stainless Steel Ball Valve
1	Actuator housing	PC alloy
2	Valve body	Brass with nickel plating,304,316
3	Valve ball	Brass with chrome plating,304,316
4	Stem	Brass,304,316
5	Ball seat	PTFE
6	Seal	EPDM, FPM, SI



### Dimension



### Connection Size (unit:mm)

DN	D1/D2	d	L1/L2	L3	L4/L5/L6	L	H1	H2	F	W (kg)
DN8	G1/4"	6	25	38.5	11.7	50	11	18.25	17	0.26
DN10	G3/8"	8	27.5	44	13	55	13	19.25	20	0.31
DN15	G1/2"	12	33.5	54.5	15	67	17	21.25	27	0.37
DN20	G3/4"	15	38.5	64	15	77	20.3	23.25	31	0.52
DN25	G1"	15	47	72.5	18	94	20.3	23.25	38	0.84