

HKV 914 SERIES HYDRAULIC 2-WAY BALL VALVES

HKV 914 Series Hydraulic 2-Way Ball Valves are used to either shut-off or open of flow passage and their easy operation provides unrestricted flow. Due to their volumetric structure they work rapidly and efficiently, and prevent cavitation.

HKV 914 Series Ball Valves can be locked in the open or closed position through locking washer on the circle pin. Internal ball is hard chrome coated steel and delrin (POM) seated.

Ball Valves are suitable for LPG, CNG and other gas applications, as well as hydraulic and other industrial fluids.

Body Material: Carbon Steel

Ball Material: Hard chrome coated carbon steel.

Threaded Size: BSP

Ball Seats: Delrin (POM)

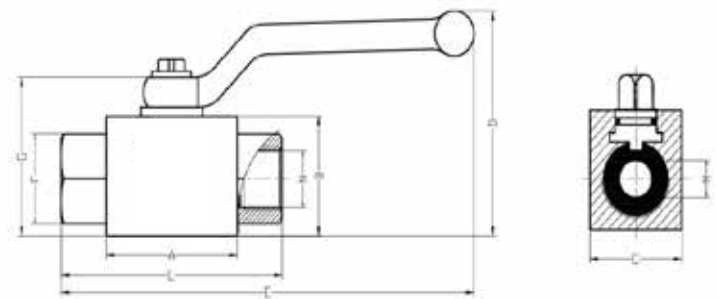
Sealing: Nitrile O-ring (NBR)

Working Temperature: -30° C to +110° C

Plating: Zinc Plating (Cr III Passivation)

On Request: VITON (-30 °C - +225 °C)

Application: Excavators, plastic injection mould machines, chemical processing plants, cranes, tankers, dump trucks and general hydraulic applications.



Technical Features

Dimensions (mm)								
A	B	C	D	E	F	G	L	M
45	35	30	77	142	24	48	75	DN10
45	35	30	77	142	24	48	75	DN10
50	40	35	32	147	30	53,50	84	DN13
60	55	45	32	221	38	73	96	DN20
70	60	55	32	235	46	78	118	DN25
70	60	55	32	235	50	78	134	DN25
70	60	55	32	235	55	78	140	DN25

Code	Size	Working Pressure
HKV-914.01	1/4" BSP	500
HKV-914.02	3/8" BSP	500
HKV-914.03	1/2" BSP	500
HKV-914.04	3/4" BSP	400
HKV-914.05	1" BSP	400
HKV-914.06	1 1/4" BSP	380
HKV-914.07	1 1/2" BSP	380

Working pressures of ball valves for high temperature with viton sealing and teflon are 35% lower than pressure above

