

tork

valve & automation



**GAS
DISTRIBUTION
APPROVED**



**GR 30 MODEL
PN 1 (MAXIMUM WORKING PRESSURE) GAS PRESSURE
FILTER REGULATORS AND**

**GR60 MODEL
PN1 (MAXIMUM WORKING PRESSURE) GAS PRESSURE
FILTER REGULATORS WITH OVER AND LOW PRESSURE
OUTLET CLOSING ENGLISH INSTRUCTION MANUAL
SMS Sanayi Malzemeleri Üretim ve Satışı A.Ş**

Head Office: Yukarı Dudullu Bostancı Yolu, Kuru Sk. No:16 Ümraniye/İstanbul

Tel: 0216 364 34 05 Faks: 0216 364 37 57

Factory: Çerkeşli OSB Mh. İMES 5. Cd. No:6 Dilovası İMES OSB Gebze/Kocaeli

Tel: 0262 290 20 20 Faks: 0262 290 20 21

tork@smstork.com

satis@sms-tork.com.tr

www.smstork.com

GR60 MODEL PN 1 (MAXIMUM WORKING PRESSURE) GAS PRESSURE FILTER REGULATORS WITH OVER AND GR30 LOW PRESSURE OUTLET CLOSING ENGLISH INSTRUCTION MANUAL

WARNING: Please read carefully and keep this manual for future reference.

WARNING: All instructions given in this GR30 instruction manual must be carried out by qualified technicians or authorized services.

WARNING: To avoid personal injury and financial damage, read the instructions carefully before using device. All installation, setting, operating and maintenance work must be done according to instructions. That device must be installed considering current technical regulations.

DECLARATION OF CONFORMITY:As manufacturer we declare, GR60 product that indicated as CE is in conformity with the Directive 97/23. Products indicated as in conformity with directives are same with the samples that are controlled by 0036 numbered authority. Products have quality assurance in accordance with ISO 9001-2008. As manufacturer we declare, GR 30 product that indicated as CE is in conformity with the Directive 97/23. Products have quality assurance in accordance with ISO 9001-2008.

1-DESCRIPTION

GR60 Regulator is a device that reduces variable input pressure in the gas line to the needed values at downstream and keep it stable at that value also equipped with safety system against increases or decreases of regulated output pressure more than allowed. Safety closing regulator consists of regulator part that transfers input pressure by reducing to output pressure and safety closing valve part that closes down gas flow at unneeded pressure changes. Closing value of safety closing valve is regulated according to output pressure.

Safety closing regulator steps in due to safety closing system to provide safety of device in the event of output pressure is exceed or drop down of the regulated values and closes down gas flow.

To restart the regulator and gas flow, it is supposed to remove the reasons caused closing then install safety closing valve by hand and calibrate the device as given below

Safety closing gas pressure regulators that can be used in domestic and industrial area, have Maximum 1 bar input pressure also they have filtering organ not to allow scraps, dust or debris to enter device and prevent subsequent devices (burner, counter) from obstructing so it makes gas fired devices like burner, oven, heating systems possible to run safely. Regulators have high-performance; high durability, wide and adjustable output pressure range and additionally they are spring force and pressure-shifted.

Gr30 Gas pressure regulators that can be used in domestic and industrial area, have Maximum 1 bar input pressure also they have filtering organ not to allow scraps, dust or debris to enter device and prevent subsequent devices (burner, counter) from obstructing. Gas pressure regulator can reduce the pressure of non-corrosive gases through manual setting spring and can keep it stable at that value automatically, so it makes gas fired devices like burner, oven, heating systems possible to run safely. Regulators have high-performance; high durability, wide and adjustable output pressure range and additionally they are spring force and pressure-shifted.

MODEL NUMBER GR 60 and GR30 model regulators are classified in 6 minor groups according to their connection diameters

TABLE - 1

Connection Diameter	Model Number	Connection Size	Model Number
DN 15	GR-60.03	DN 15	GR-30.03
DN 20	GR-60.04	DN 20	GR-30.04
DN 25	GR-60.05	DN 25	GR-30.05
DN 32	GR-60.06	DN 32	GR-30.06
DN 40	GR-60.07	DN 40	GR-30.07
DN 50	GR-60.08	DN 50	GR-30.08

It is important to read instructions given below carefully before using the device.

3- WORKING PRINCIPLE-AREA OF USAGE-GENERAL DESCRIPTION-TECHNICAL DATA AND PROPERTIES

GR60 regulators are devices that can reduce the line pressure and keep it stable on that value through screw or unscrew (preferable) the setting spring at the upper cap part manually and keep it stable at that value also equipped with safety system against increases or decreases of regulated output pressure more than allowed. Maximum working pressure of the regulator is 1 bar and they have a safety diaphragm to disrupt gas flow in case of the main diaphragm is torn.

GR60 Usage area: Mains and industrial usage

Fluid type: Natural gas, lpg, methane, propane, butane, town gas, air, non-corrosive gases (number 3 gas group)

Environment temperature: -15°C; 60°C

Max. Superficial temperature: 60°C

Max. Input and Working pressure: 1 bar

Output Pressure Setting Range: 8-450 mbar (Outlet pressure can be changed or adjusted by using springs in Table-2.)

Shut-Off Time: less than 1 second

Maximum safety pressure adjustment range: 30-450 mbar

Minimum safety pressure adjustment range: 5-30 mbar

Threaded connections: DN 15, DN 20, DN 25, DN 32, DN 40, DN 50 Connections Threaded Connection

Filtration and filtration class: 20 micron -- G2 (In case of need different pore diameters)

Materials: Aluminum body and cap, rustproof, knitted, washable, removable synthetic fiber filter, O-rings and seals that provide gas-tightness are resistant to number 3 gas group H-NBR. Device, Material and Documentation Norms:

Aluminum and Aluminum Alloys: TS EN 1706, TS EN 2349, TS 573-3

Brass and Copper Alloys: TS EN 12449, TS EN 12164

Stainless Steels: TS EN 10088

Filter: TS EN 779

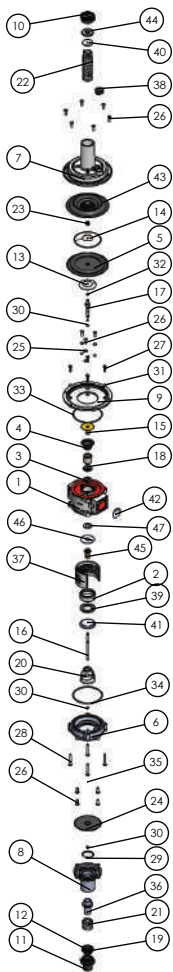
Springs: TS 1440

Seal, diaphragm and O-rings (NBR Rubber) :TS EN 13787, TS 10909 EN 549, TS 9808, TS 3563 Threaded connections: ISO 7/1, TS 61-210 EN 10226

Nylon materials: EN 11667

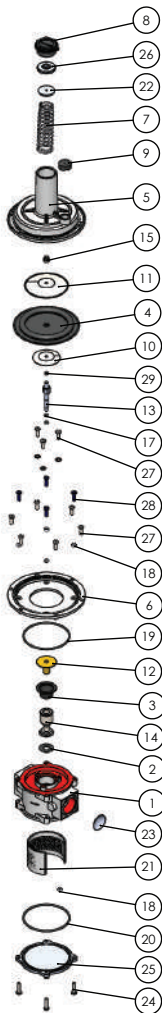
Documentation Norms: Our products conform to the 97/23/EC Directive, EN 88 and TS 10624 standards.





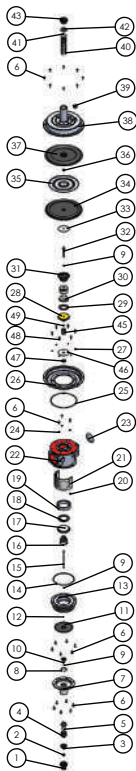
Pos. NO	NAME OF PART	UNIT
1	REGULATOR BODY 1" MACHINED	1
2	SEAT BUSHING SAFETY SHUT-OFF CLOSING 1/2"-1" MACHINED	1
3	REGULATOR SEAT GASKET 1/2"-1" 1 BAR SMS 52 (HI-NBR)	1
4	BALANCE DIAPHRAGM REGULATOR 3/4"-1" SMS 45	1
5	INNER DIAPHRAGM REGULATOR 1/2"-1" 1 BAR SMS 43	1
6	LOWER SAFETY BODY REGULATOR 3/4"-1" MACHINED	1
7	PIPE COVER REGULATOR 1/2"-1" MACHINED	1
8	SAFETY PIPE COVER 3/4"-1" MACHINED	1
9	BOWL COVER REGULATOR 1/2"-1" MACHINED FASON	1
10	UPPER PLUG 1/2"-2" 1 BAR	1
11	LOWER SHUT-OFF PLUG 1/2"-2" 1 BAR	1
12	HIGH PRESSURE SHUT-OFF ADJUSTMENT NUT 3/4"-2"	1
13	ALUMINUM SHEET CUT 55X1 - PRESSED	1
14	ALUMINUM SHEET 83X1.5 - PRESSED	1
15	BUSHING (SEAT BEARING) REGULATOR 1/2"-1" MACHINED	1
16	SAFETY LOCKING SHAFT 3/4"-1" (STAINLESS STEEL) M4	1
17	BALANCE DIAPHRAGM CARRIER SHAFT REGULATOR 1/2"-1" (BRASS)	1
18	SEAT (BALANCE) REGULATOR 1/2"-1" MACHINED	1
19	SHUT-OFF HANDLE (BRASS) M4	1
20	CONICAL SPRING 1.80 MM	1
21	SPRING (1.8X29X25X5) GY27	1
22	SPRING (1.6X29X97X12) GY2	1
23	M6 INOX FIBER LOCK NUT M6 TORK-RA 100 (DIN 985)	1
24	SAFETY BALANCE DIAPHRAGM 3/4"-1 SMS 53	1
25	M6 INOX WASHER COVER ADJUSTMENT TORK-RA 040-060	3
26	BOLT M5X14 GALVANIZED YSB / Ejot:6327417809	13
27	BOLT M5X16 GALVANIZED YSB / Ejot:6327417809	4
28	BOLT M5X35 GALVANIZED YSB	4
29	SEGMAN 472/32 SHUT-OFF 3/4"-2"	1
30	O-RING 5X1.5 70 SHORE	4
31	O-RING 5X2 EPDM 70 SHORE	8
32	O-RING 5.23X2.62 70 SHORE	1
33	O-RING 80X2.62 70 SHORE NBR	1
34	O-RING 80X3 70 SHORE	1
35	STAINLESS STEEL BALL 2.4 MM REGULATOR	3
36	HIGH PRESSURE BUSHING SHUT-OFF 3/4"-2"	1
37	FILTER SHUT-OFF 3/4"-1" SMS-7	1
38	BREATHER PLUG (1/2"-2")	1
39	REGULATOR SEAT GASKET 1 1/4"-1 1/2" 1 BAR SMS 55	1
40	GAS REGULATOR ADJUSTMENT WASHER 3/4"-2"	1
41	GAS VALVE SIT 1 1/4"-1 1/2" MACHINED	1
42	FILTER STRAINER 316 QUALITY STAINLESS STEEL FOR 1"	1
43	OUTER DIAPHRAGM REGULATOR 1/2"-1" 1 BAR SMS 44	1
44	GAS REGULATOR ADJUSTMENT NUT 3/4"-2"	1
45	SAFETY SHUT-OFF DIAPHRAGM CARRIER BUSHING 1/2"-1" MACHINED	1
46	ALUMINUM SHEET CUT 40X1 - PRESSED VERSION 3	1
47	M12 INOX WASHER 2 MM GALVANIZED COATED	1

Figure 1 GR60 Model DN15 - DN20 - DN25 Nominal Diameter TORQ Filtered Safety Shut-Off Gas Regulator Product Tree



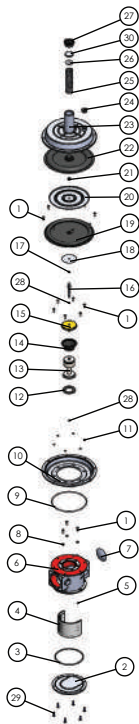
Pos. NO	NAME OF PART	UNIT
1	REGULATOR BODY 1" MACHINED	1
2	REGULATOR SEAT GASKET 1/2"-1" 1 BAR SMS 52 (HI-NBR)	1
3	BALANCE DIAPHRAGM REGULATOR 3/4"-1" SMS 45	1
4	INNER DIAPHRAGM REGULATOR 1/2"-1" 1 BAR SMS 43	1
5	PIPE COVER REGULATOR 1/2"-1" MACHINED	1
6	BOWL COVER REGULATOR 1/2"-1" MACHINED FASON	1
7	SPRING (1.6X29X97X12) GY2	1
8	UPPER PLUG 1/2"-2" 1 BAR	1
9	BREATHER PLUG (1/2"-2")	1
10	ALUMINUM SHEET CUT 55X1 - PRESSED	1
11	ALUMINUM SHEET 83X1.5 - PRESSED	1
12	BUSHING (SEAT BEARING) REGULATOR 1/2"-1" MACHINED	1
13	BALANCE DIAPHRAGM CARRIER SHAFT REGULATOR 1/2"-1" (BRASS)	1
14	SEAT (BALANCE) REGULATOR 1/2"-1" MACHINED	1
15	M6 INOX FIBER LOCK NUT M6 TORK-RA 100 (DIN 985)	1
16	M6 INOX WASHER COVER ADJUSTMENT TORK-RA 040-060	3
17	O-RING 5X1.5 70 SHORE	2
18	O-RING 5X2 EPDM 70 SHORE	5
19	O-RING 80X2.62 70 SHORE NBR	1
20	O-RING 80X3 70 SHORE	1
21	FILTER REGULATOR 1/2"-1" 1 BAR SMS-5	1
22	GAS REGULATOR ADJUSTMENT WASHER 3/4"-2"	1
23	FILTER STRAINER 316 QUALITY STAINLESS STEEL FOR 1"	1
24	BOLT M5X20 GALVANIZED YSB	4
25	GAS FILTER COVER 1/2"-1" MACHINED	1
26	GAS REGULATOR ADJUSTMENT NUT 3/4"-2"	1
27	BOLT M5X14 GALVANIZED YSB / Ejot:6327417809	9
28	BOLT M5X16 GALVANIZED YSB / Ejot:6327417809	4
29	O-RING 5.23X2.62 70 SHORE	1

Figure 2 GR30 Model DN15 - DN20 - DN25 Nominal Diameter TORK Filtered Gas Regulator Product Tree



Pos. NO	PART OF NAME	UNIT
1	LOWER SHUT-OFF PLUG 1/2"-2" 1 BAR	1
2	SHUT-OFF HANDLE (BRASS) M4	1
3	HIGH PRESSURE SHUT-OFF ADJUSTMENT NUT 3/4"-2"	1
4	SPRING (1.8X29X25X5) GY27	1
5	HIGH PRESSURE BUSHING SHUT-OFF 3/4"-2"	1
6	BOLT M5X14 GALVANIZED YSB / Ejot:6327417809	23
7	SAFETY PIPE COVER 1 1/4"-2" MACHINED	1
8	SEGMAN 472/32 SHUT-OFF 3/4"-2"	1
9	O-RING 5X1.5 70 SHORE	3
10	SAFETY SHUT-OFF DIAPHRAGM CARRIER BUSHING 1 1/4"-2" MACHINED	1
11	SAFETY BALANCE DIAPHRAGM 1 1/4"-2"	1
12	STAINLESS STEEL BALL 2.4 MM REGULATOR	3
13	LOWER SAFETY BODY REGULATOR 1 1/4"-2" MACHINED	1
14	O-RING 112X3	1
15	SAFETY LOCKING SHAFT 1 1/4"-2" (STAINLESS STEEL)	1
16	CONICAL SPRING 1.80 MM	1
17	SHUT-OFF SIT 2" MACHINED	1
18	GAS VALVE SIT RUBBER 2" SMS 19	1
19	SEAT BUSHING SAFETY SHUT-OFF 2" MACHINED	1
20	OO-RING 5X2 EPDM 70 SHORE	1
21	FILTER REGULATOR 2" SMS-9	1
22	REGULATOR BODY 2" MACHINED	1
23	FILTER STRAINER 316 QUALITY STAINLESS STEEL FOR 2"	1
24	M6 INOX WASHER COVER ADJUSTMENT TORQ-RA 040-060	3
25	O-RING 133X3.5	1
26	BOWL COVER REGULATOR 1 1/4"-2" 1 BAR RAW MATERIAL	1
27	O-RING 4X2 NBR 70 SHORE	6
28	BUSHING (SITBEARING) REGULATOR 1 1/4"-1 1/2" MACHINED 1/2" -	1
29	GAS VALVE SEAT RUBBER 2"	1
30	SEAT (BALANCE) REGULATOR 2" MACHINED	1
31	BALANCE DIAPHRAGM REGULATOR 2" SMS 46	1
32	BALANCE DIAPHRAGM CARRIER SHAFT REGULATOR 1 1/4"-1 1/2" Ø (BRASS)YICI 1 1/4"-1 1/2"	1
33	ALUMINUM SHEET CUT 65X1 - PRESSED	1
34	INNER DIAPHRAGM REGULATOR 1 1/4"-2" 1 BAR SMS 47	1
35	STEEL SHEET CUT 175X15 - COATED	1
36	SM6 INOX FIBER LOCK NUT M6 TORQ-RA 100 (DIN 985)	1
37	OUTER DIAPHRAGM REGULATOR 1 1/4"-2" 1 BAR SMS 48	1
38	PIPE COVER REGULATOR 1 1/4"-2" MACHINED	1
39	BREATHER PLUG (1/2"-2")	1
40	SPRING (2.5X29X114X15) GY4	1
41	GAS REGULATOR ADJUSTMENT WASHER 3/4"-2"	1
42	GAS REGULATOR ADJUSTMENT NUT 3/4"-2"	1
43	UPPER PLUG 1/2"-2" 1 BAR	1
45	FLAT BRASS SPRING VALVE 1.1	1
46	ALUMINUM SHEET CUT 60X1	1
47	FIXING SAFETY SHUT-OFF DIAPHRAGM CARRIER BUSHING 1 1/4"-2" MACHINEDICI	1
48	BOLT M5X16 GALVANIZED YSB / Ejot:6327417809	6
49	OO-RING 5.23X2.62 70 SHORE	1

Figure 3 GR60 Model DN32 - DN40 - DN50 Nominal Diameter TORQ Safety Shut-Off Gas Regulator Product Tree



Pos. NO	NAME OF PART	UNIT
1	BOLT M5X14 GALVANIZED YSB / Ejot:6327417809	17
2	GAS FILTER COVER 1 1/4"-2" MACHINED	1
3	O-RING 112X3	1
4	FILTER REGULATOR 2" SMS-9	1
5	O-RING 5X2 EPDM 70 SHORE	1
6	REGULATOR BODY 2" MACHINED	1
7	FILTER STRAINER 316 QUALITY STAINLESS STEEL FOR 2"	1
8	M6 INOX WASHER COVER ADJUSTMENT TORK-RA 040-060	3
9	O-RING 133X3.5	1
10	BOWL COVER REGULATOR 1 1/4"-2" 1 BAR RAW MATERIAL	1
11	O-RING 4X2 NBR 70 SHORE	6
12	GAS VALVE SIT RUBBER 2"	1
13	SIT (BALANCE) REGULATOR 2" MACHINED	1
14	BALANCE DIAPHRAGM REGULATOR 2" SMS 46	1
15	BUSHING (SEAT BEARING) REGULATOR 1 1/4"-1 1/2" MACHINED	1
16	BALANCE DIAPHRAGM CARRIER SHAFT REGULATOR 1 1/4"-1 1/2" (BRASS)	1
17	O-RING 5.23X2.62 70 SHORE	1
18	ALUMINUM SHEET CUT 65X1 - PRESSED	1
19	INNER DIAPHRAGM REGULATOR 1 1/4"-2" 1 BAR SMS 47	1
20	STEEL SHEET CUT 175X1.5 - COATED	1
21	M6 INOX FIBER LOCK NUT M6 TORK-RA 100 (DIN 985)-	1
22	OUTER DIAPHRAGM REGULATOR 1 1/4"-2" 1 BAR SMS 48	1
23	PIPE COVER REGULATOR 1 1/4"-2" MACHINED	1
24	BREATHER PLUG (1/2"-2")	1
25	SPRING (2.5X29X114X15) GY4	1
26	GAS REGULATOR ADJUSTMENT WASHER 3/4"-2"	1
27	UPPER PLUG 1/2"-2" 1 BAR	1
28	O-RING 5X1.5 70 SHORE	2
29	BOLT M5X16 GALVANIZED YSB / Ejot:6327417809	6
30	GAS REGULATOR ADJUSTMENT NUT 3/4"-2"	1

Figure 4 GR30 Model DN32 - DN40 - DN50 Nominal Diameter TORK Filtered Gas Regulator Product Tree

Regulator is designed to be installed front of settings organs to control pressure of the gas lines.

Tork regulators are in conformity with the Directive 94/9/CE as device of group II and category 3G and 3D. Device group II -category 3 includes the devices designed to supply protection in normal standards. Device group of II and category 3 is suitable to be used in areas which has a low potentiality of originate explosive atmosphere or might originate explosive atmosphere for very short time. It is suitable to be installed in the zones 1 and 21 besides in the zones 2 and 22. The regulator is not suitable to be used in zones 0 and 20 as classified in the Directive 99/92/EC.

Regulator can be dangerous for the other devices close to it as a result of damage either of the working diaphragm or of the safety one, only in this case regulator is a source of emission of gas and it can originate dangerous areas 0 as defined in the 99/92/EC Directive.

Outside the regulator, at downstream of it, there is checking pressures tap for the control of the regulation pressure.

The device, if installed, serviced and maintained regarding all the conditions and technical instructions in this document, is not a source of danger. Particularly, during the normal working, it is only infrequent to cause an inflammable atmosphere.

To determine the dangerous zones, see the norm EN60079-10.

Filtering organ is made of washable and removable synthetic material and seal for gas-tight is made of NBR material.

Output pressure setting ranges of GR60 and GR30 model gas regulators can be adjusted and changed by using different springs. Adjustable output pressure ranges according to connection diameters and spring properties are seen in the Table 2 and Table 3 below

Input Pressure	Spring Code	Connections	Adjustable Output Pressure Range (mbar)	Spring marking Colour
Maximum 1 Bar	GY - 01	DN 15 - 20 - DN 25	8 - 14	Red
Maximum 1 Bar	GY - 02	DN 15 - 20 - DN 25	14 - 40	Yellow
Maximum 1 Bar	GY - 03	DN 15 - 20 - DN 25	40- 92	Green
Maximum 1 Bar	GY - 04	DN 15 - 20 - DN 25	92 - 130	Blue
Maximum 1 Bar	GY - 05	DN 15 - 20 - DN 25	130 - 165	Black
Maximum 1 Bar	GY - 06	DN 15 - 20 - DN 25	180 - 450	White
Maximum 1 Bar	GY - 03	DN 32 - DN 25	8 - 14	Green
Maximum 1 Bar	GY - 04	DN 32 - DN 25	14 - 25	Blue
Maximum 1 Bar	GY - 11	DN 32 - DN 25	8 - 14	Black
Maximum 1 Bar	GY - 06	DN 32 - DN 25	14 - 40	White
Maximum 1 Bar	GY - 13	DN 32 - DN 25	40- 92	White- Red
Maximum 1 Bar	GY - 20	DN 32 - DN 25	92 - 130	Red
Maximum 1 Bar	GY - 21	DN 32 - DN 25	130 - 165	Yellow
Maximum 1 Bar	GY - 03	DN 50	180 - 450	Green
Maximum 1 Bar	GY - 04	DN 50	8 - 14	Blue
Maximum 1 Bar	GY - 11	DN 50	14 - 25	Black
Maximum 1 Bar	GY - 06	DN 50	62 - 118	White
Maximum 1 Bar	GY - 13	DN 50	118 - 182	White - Red
Maximum 1 Bar	GY - 20	DN 50	182 - 325	Red
Maximum 1 Bar	GY - 21	DN 50	325 - 450	Yellow

Table - 2 GR60 Model regulators Spring Selection Table

Safety pressure setting ranges of GR60 model gas regulators can be adjusted and changed by using different springs. Adjustable maximum and minimum safety pressure ranges according to connection diameters and spring properties are seen in the table 4 and table 5 below

Input Pressure	Spring Code	Connection	Setting (mbar)	Spring Marking Colour
Maximum 1 Bar	GY - 24	DN 15 - 20 - DN 25	35 - 110	Green
Maximum 1 Bar	GY - 23	DN 15 - 20 - DN 25	110 - 210	Yellow
Maximum 1 Bar	GY - 25	DN 15 - 20 - DN 25	210 - 450	Blue
Maximum 1 Bar	GY - 22	DN 32 - DN 40	30 - 120	Red
Maximum 1 Bar	GY - 25	DN 32 - DN 40	140 - 200	Blue
Maximum 1 Bar	GY - 22	DN 50	30 - 100	Red
Maximum 1 Bar	GY - 24	DN 50	100 - 150	Green

Table - 4 GR60 Model for Maximum Shut Regulators Spring Selection Table

Input Pressure	Spring Code	Connection	Setting (mbar)	Spring Marking Colour
Maximum 1 Bar	GY - 26	DN 15 - 20 - DN 25 DN 32 - DN 40 - DN 50	5 - 30	White

Table - 5 GR60 Model for Minimum Shut Regulators Spring Selection Table

Input Pressure	Spring Code	Connection	Setting (mbar)	Spring Marking Colour
Maximum 1 Bar	GY - 01	DN 15 - 20 - DN 25	8 - 16	Red
Maximum 1 Bar	GY - 02	DN 15 - 20 - DN 25	16 - 35	Yellow
Maximum 1 Bar	GY - 03	DN 15 - 20 - DN 25	35 - 90	Green
Maximum 1 Bar	GY - 04	DN 15 - 20 - DN 25	90 - 140	Blue
Maximum 1 Bar	GY - 05	DN 15 - 20 - DN 25	140 - 200	Black
Maximum 1 Bar	GY - 06	DN 15 - 20 - DN 25	200 - 500	White
Maximum 1 Bar	GY - 07	DN 32 - DN 40 - DN 50	9 - 14	Red
Maximum 1 Bar	GY - 08	DN 32 - DN 40 - DN 50	14 - 24	Yellow
Maximum 1 Bar	GY - 09	DN 32 - DN 40 - DN 50	24 - 32	Blue
Maximum 1 Bar	GY - 10	DN 32 - DN 40 - DN 50	32 - 55	Green
Maximum 1 Bar	GY - 11	DN 32 - DN 40 - DN 50	55 - 80	Black
Maximum 1 Bar	GY - 06	DN 32 - DN 40 - DN 50	80 - 160	White
Maximum 1 Bar	GY - 13	DN 32 - DN 40 - DN 50	160 - 300	White - Red
Maximum 1 Bar	GY - 14	DN 32 - DN 40 - DN 50	300 - 500	White - Yellow

Table - 3 GR30 Model Regulators Spring Selection Table



4-INSTILATION

All installation work must be carried out by skilled technician. Installation should not be done by user absolutely.

Regulator is normally installed before the user. It must be installed with the arrow on the body towards the user, so flow direction is from mains to the user. Connect the product to the male thread through screwing and check gas-tightness. Regulator can be installed in any direction but it is preferable to install with the spring vertically. (It is not recommended to install with the regulator cap downwardly.) Regulator is suitable for installation to horizontal pipes. If it is needful to install to vertical pipes, prefer vertical pipes which flow direction is from top to bottom. Output pressure of the regulator can be checked by the test nipple in the output direction. Every regulator must be installed suitable for calibration in place.

It is recommended to use filter in every facility.

Remove plastic strainers of the output and input of the regulator, before installation.

Every facility must be cleaned by air before installation.

Dimensional measures of product and line compatibility must be checked before installation.

The pipes must be cleaned and aligned before installation.

Check that if there is any setover in the line before installation.

The gas supply must be shut off before installation. Be sure that pressurized gas is not present in the line and the emission of gas is blocked over the installation Also make sure the controlling valve of the gas flow is off.

Before the installation, installation area must be checked if there are potential sources or dangerous devices close the regulator that is suspicious to originate electric arc or sparks.

The line must be checked if there are particles, scraps exc. before installation.

Vents for unloading the active line must be allocated before installation.

Inert gas must be applied to the natural gas system before the cutting and welding processes are started During installation take care not to allow metal pieces, swarf or seals to enter the device.

During installation product must not be overloaded or impacted. Install without mechanical stress.

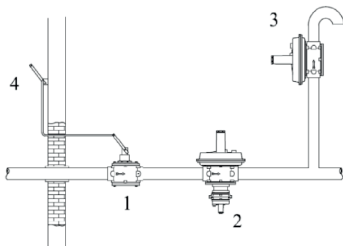
Use seal materials that are allowed to use in installation.

Install by using appropriate tool without applying hand force to body or cap.

Check that regulator is assembled not reverse after installation.

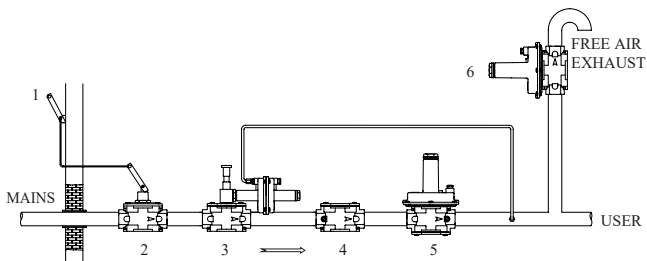
Always check that system is gas-tight after installation.

Example of installation and product dimensions are given below.



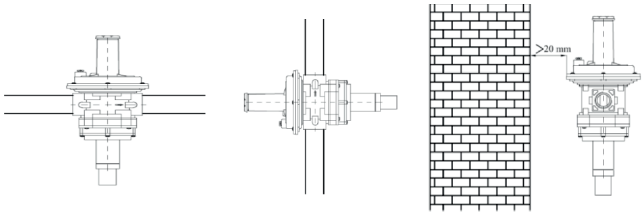
- 1- Handle On/OFF valve
- 2- GR60 model safety closing gas regulator
- 3- TORK-DT Overflow valve
- 4- Lever for remote handle ON/OFF valve control

Figure - 5 GR 60 Model DN 15 - DN 20 - DN 25 Filter Gas Regulator Installation And Line Diagram



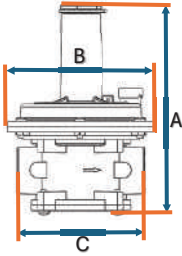
- 1-Lever for remote handle ON/OFF valve control
- 2-Handle On/OFF valve
- 3-E Maximum or minimum downstream pressure closing valve
- 4-GF-10 model gas filter
- 5-GR-30 model gas regulator
- 6-T-DT overflow valve

Figure - 7 7T-GRE Model DN 32 - DN 40 - DN 50 Filter Gas Regulator Installation And Line Diagram

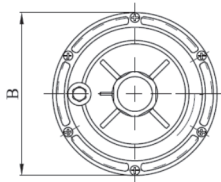
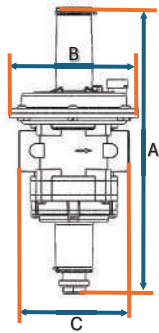


Body Should not contact the wall. There Should be minimum 20 mm betwnn the wall and body.

GR 30



GR 60



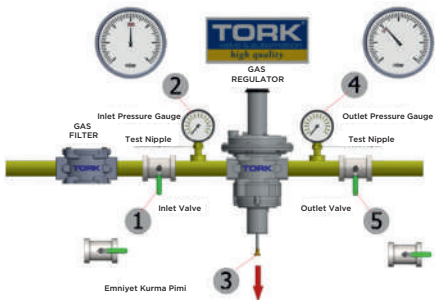
GR30 İÇİN DN15 - DN20 - DN25 - DN32 - DN40 - DN50

GR30	A - HEIGHT (mm)	B - DIAMETER (mm)	C - INLET-OUTLET DISTANCE (mm)
GR3003	197	140	120
GR3004	197	140	120
GR3005	197	140	120
GR3006	240	225	160
GR3007	240	225	160
GR3008	262	225	160

GR60	HEIGHT	DIAMETER	INLET-OUTLET DISTANCE
GR6003	310	140	120
GR6004	310	140	120
GR6005	310	140	120
GR6006	361	225	160
GR6007	361	225	160
GR6008	383	225	160

5- 5-CHANGEOVER OF OUTPUT PRESSURE AND SPRING GR60 MANUEL RESET

Our products are manufactured in pursuance of user demand as output and safety pressures are adjusted and assemble lever is off. Therefore assembly work must be carried out by user the way that given below



- 1- Open the valve slowly in 4 steps.
- 2- Confirm 300 mbar in input manometer.
- 3- Remove the tap number 55 by rotating anticlockwise. Pull number 56, reset handgrip and waiting for 5 seconds.
- 4- Confirm 21 mbar in output manometer.
- 5- Open the output valve slowly in 4 steps. Reinstall the tap number 55 by rotating clockwise manually.

CALIBRATION:

GR60:

Safety closing pressure is not adjusted on our products as standard. Safety closing pressure is adjusted on request. Our standard products have minimum safety closing system but it is not enabled. To enable minimum safety closing pressure and install, follow the instructions given in B.

If user needs both of the minimum safety closing system and maximum safety closing system, that must be informed to us on order instructions. As long as having a special request, our standard products have only maximum safety closing system.

GR 30:

Calibration: Before starting the system, pay attention that the regulation spring can supply the needed regulation pressure. To supply pressure to the regulator, open input valve (Figure 2-number 2) slowly and gradually. (Do not open the input valve instantly.) After removing the plastic tap, calibrate the regulator at the minimum and turn the adjusting screw slowly clockwise and calibrate the output pressure up to the needed pressure. Output pressure of the regulator can be checked by the test nipple in the output direction.

GR60 ADJUSTMENT OF MAXIMUM SAFETY CLOSING PRESSURE AND OUTPUT PRESSURE

- 1- Open the valve in the gas incoming direction slowly.
- 2- Remove taps number 27 and tap number 55 by rotating anti-clockwise.
- 3- Remove safety reset pin number 56 rotating anti-clockwise.
- 4- Number 52 maximum safety closing (high pressure safety closing) setting screw by rotating clockwise with wrench 22.
- 5- Screw safety reset pin number 56 to threaded hole by rotating clockwise.
- 6- Unscrew regulation screw that adjusts the output pressure by rotating anti-clockwise. (For doing assemble work.)
- 7- Pull the reset handgrip (number 56 safety reset pin) outward and manual reset the regulator. Verify that gas flows in regulator in that condition.
- 8- Adjust the output pressure to the needed maximum safety closing pressure by rotating the regulation screw clockwise
- 9- Unscrew maximum safety closing (high pressure safety closing) setting screw anti-clockwise slowly to decrease 1 mbar per second till the regulator is closed and verify closure process of regulator so maximum safety closing pressure is adjusted.
- 10- Unscrew the regulation screw that adjusts output pressure by rotating clockwise and decrease output pressure. (For doing assemble work.)

11-Pull the reset handgrip(number 56 safety reset pin) outward and manual reset the regulator. Verify that gas transits from regulator in that stage.

12-Adjust the output pressure to the needed output pressure by rotating the regulation screw clockwise. (Be sure that regulated pressure does not exceed maximum safety closing pressure.) 13-Reassemble taps number 27 and number 55 by screwing clockwise then complete the calibration process.

GR60 ADJUSTMENT CONTROL: Increase the regulated output pressure to the maximum safety closing pressure that is adjusted before, by rotating clockwise and see that regulator is closed. (Consider safety closing pressure can change inclusive of tolerances stated on labels.) Afterwards unscrew the regulation screw that adjusts the output pressure by rotating anti-clockwise and decrease output pressure. Pull assemble lever outward and assemble the regulator. In that condition verify that gas transits from regulator. (If you have difficulty in assembling, consider WARNING- 2.) Regulate the output pressure to the needed pressure and complete the control process.

WARNINGS:

WARNING-1, for item 1: Do not open input valve instantly.

WARNING-2, for item 7 and 11: If you have difficulty in assembling the lever or the regulator is closed on an undesired value, try to unscrew the regulation screw a bit more rotating anti-clockwise. Unscrew till reset handgrip is manual reset. Except for that process, if regulator is adjusted to close at both maximum safety closing pressure and minimum safety closing pressure, be sure decreased output pressure is not in the range of minimum safety closing pressure. If you suspect output pressure is in the range of minimum safety closing pressure, unscrew minimum safety closing (low pressure safety closing)setting screw number 51 rotating anti-clockwise. In that way disable the minimum safety closing pressure and remove the possibility to block adjustment of regulation pressure or maximum safety pressure or be sure regulated output pressure is above the range of minimum safety closing pressure.

WARNING-3, for item 8: If the regulator is closed before output pressure reaches to the safety closing pressure, decrease output pressure pull the assemble lever outward, rotate maximum safety closing setting screw a bit more clockwise and regulate output pressure to the needed safety pressure. Repeat that process till output pressure reaches to the required safety closing pressure.

WARNING-4, for item 12: During that process verify that needed output pressure does not exceed maximum safety closing pressure adjusted before.

WARNING-5: As adjusting maximum safety closing pressure, before item 1, be sure minimum safety closing setting screw is at the loosest position, in other words minimum safety closing system is off. If it is not, unscrew minimum safety closing setting screw number 51 anticlockwise to the end regard- ing not to affect installation.

GR60 ADJUSTING OF MINIMUM SAFETY CLOSING PRESSURE

As important information, begin with maximum safety closing pressure to adjust, then continue with minimum safety closing pressure if it is needed.

- 1-Remove taps number 27 and tap number 55 by rotating anti-clockwise.
- 2-Check that if maximum safety closing pressure and output pressure is regulated and also regulator is assembled. If are not actualized, follow the steps given above and actualize the conditions. Before calibration, be sure minimum safety closing setting screw number 51 is at the loosest position, so regulator is prevented from shutting off unnecessarily.
- 3-Rotate regulation screw number 29 clockwise to reach minimum safety closing pressure. 4-Screw minimum safety closing setting screw clockwise slowly to increase 1 mbar per second till the regulator is closed. Verify closure process of regulator so minimum safety closing pressure is adjusted. 5-Screw the regulation screw that adjusts output pressure by rotating clockwise and increase output pressure regarding not to reach or exceed maximum safety closing pressure. (For doing assemble work) 6- Screw reset handgrip number 56 to threaded hole by rotating clockwise
- 7- Pull the reset handgrip outward and manual reset the regulator. Verify that gas flows in the regulator at this stage.
- 8-Regulate output pressure to the needed output pressure regarding not reach or exceed maximum safety closing pressure.
- 9- Reassemble taps number 27 and number 55 by rotating clockwise and complete calibration.

GR60 ADJUSTMENT CONTROL: Decrease the regulated output pressure to the minimum safety closing pressure that is adjusted before, by rotating anti-clockwise and see that regulator is closed. (Consider safety closing pressure can change inclusive of tolerances stated on labels.) Afterwards screw the regulation screw that adjusts the output pressure by rotating clockwise and increase output pressure. Pull reset handgrip outward and manual reset the regulator. In that condition verify that gas flows in the regulator. (If you have difficulty in assembling, consider WARNING-6 given below.) Regulate the output pressure to the needed output pressure and complete the control process.

WARNING-6, for item 5: If you have difficulty in assembling the lever, try to screw the regulation screw a bit more rotating clockwise. Screw till reset handgrip is manual reset. After that regulator is still not assembled, decrease output pressure a bit more and try again or increase maximum safety pressure rotating maximum safety closing setting screw number 52 clockwise and try again.

WARNING: In safety closing group, base of the regulator, wrench part 22 covers maximum safety closing setting screw assembling lever outwardly, minimum safety closing setting screw gets through lock nut. Consider that information during setting.

INFORMATION: If you have difficulty in assembling regulator or doing safety adjustments, unscrew regulation screw number 29 and minimum safety closing setting screw number 51 rotating anti-clock. wise and screw maximum safety closing setting screw rotating clockwise and do the calibration process in that way. If a valve is available after regulator, you can also try assembling with closing that valve.

INFORMATION: To disable minimum safety closing system or enable only maximum safety closing system, unscrew minimum safety closing setting screw number 51 to the end rotating anti-clockwise regarding not to affect installation.

INFORMATION: In the series of our safety closing regulators that can be adjusted to high output pressure values, if user needs to adjust minimum safety pressure, should contact our company and ask for different regulation springs that can produce regulation between 0 and 40 mbar on the purpose of doing minimum safety closing calibration.

GR60 EXAMPLE OF CALIBRATION:

Needed Output Pressure: 30 mbar Maximum Safety Pressure: 45 mbar

Minimum Safety Pressure: 13 mbar

1-Open the valve, is in the direction of gas flow, slowly.

2-Remove tap number 27 and number 55 by rotating anti-clockwise.

3-Remove reset handgrip number 56 by rotating anti-clockwise.

4-Rotate the maximum safety closing setting screw number 52 in direction of clockwise tightly by wrench 22.

5-Screw reset handgrip number 56 to the threaded hole by rotating clockwise.

6-Unscrew regulation screw number 29 that adjusts output pressure to the end by rotating anti-clockwise.

7-Pull reset handgrip outward and assemble regulator. Verify that gas transits from regulator in that condition.

8- Adjust output pressure to 45 mbar by rotating regulation screw clockwise

9-Screw maximum safety closing setting screw anti-clockwise slowly to decrease 1 mbar per second till the regulator is closed. Verify closure process of regulator so maximum safety closing pressure is adjusted.

10- For restarting the closed regulator by pulling the reset handgrip, regulate the pressure under 45 mbar by rotate regulation screw anti-clockwise. (For doing assemble work.)

11-Pull reset handgrip outward and manual reset the regulator. Verify that gas flows in regulator in that case.

12--Using regulation screw, adjust output pressure to 30 mbar and complete the calibration process. 13-Increase the output pressure that is regulated to 30 mbar by rotating regulation screw clockwise through 45 mbar and see if regulator is closed. (Consider safety closing pressure can change inclusive of tolerances stated on labels.) Afterwards unscrew the regulation screw that adjusts the output pressure by rotating anti-clockwise and decrease output pressure. Pull reset handgrip outward and manual reset the regulator. In that condition verify that gas flows in the regulator. (If you have difficulty in manual resetting, consider WARNING- 2.) Regulate the output pressure to 30 mbar and complete the control process.

14-Remove taps number 27 and number 55 by rotating anti-clockwise.

15-Check that if minimum safety closing setting screw number 51 is at the loosest position. So regulator is not closed unnecessarily.

16-Adjust output pressure to 13 mbar by rotating regulation screw clockwise.

17-Unscrew minimum safety closing setting screw anti-clockwise slowly decreasing 1 mbar per second till the regulator is closed and verify that regulator is closed so minimum safety pressure is adjusted. 18-Screw regulation screw that adjusts output pressure and increase output pressure over 13 mbar through rotating regulation screw clockwise regarding not to reach or exceed maximum safety closing pressure.(For doing manual reset work.)

19-Screw the reset handgrip number 56 rotating clockwise into threaded hole.

20--Pull the reset handgrip outward and manual reset the regulator. Verify that gas transits from regulator in that stage.

21-Adjust the output pressure to 30 mbar by rotating the regulation screw clockwise. (Regarding not to reach or exceed maximum safety closing pressure.)

22-Reassemble the taps number 27 and number 51 and complete calibration.

WARNING: If regulation springs that can be adjusted to high output pressures are chosen, screw spring with a screwdriver mouthed hand gun (tornavida ağızlı bir el tabancasıyla)

WARNING: If you have difficulty in removing thick springs that produce high output pressures, from funnel by hand, try to remove with a gripping tool.

WARNING: Pay attention not to exceed pressure limits stated on labels as screwing or adjusting all the springs. In the contrary case, values that belong to springs show irregular increase or decrease, in such a case unscrew the springs to the values stated on labels.

The Choice of the regulator : The choice of regulator is very important. First of all you need to know: the available input pressure in the line, needed safety closing pressure, needed output pressure and needed flow rates. Model supplies the needed flow rate should be chosen from Table-8 given below. Than springs supplies the needed output pressure and needed safety pressure for the specified model should be chosen from Table-2-4-5 and the choice process ends.

Suitable output pressure range is determined by different spring selections.

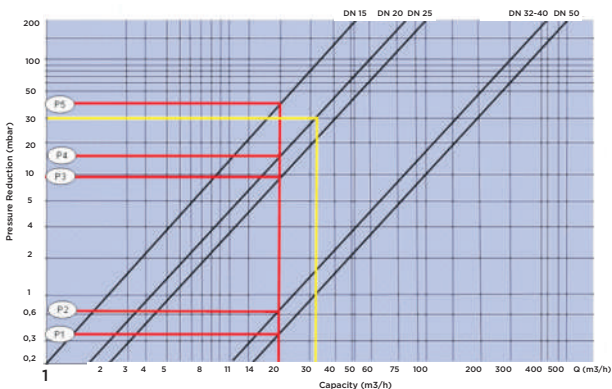
It is recommended that the flux speed mustn't exceed 30m/s.

For better regulation in high flux speeds, choose next diameter.

An ideal regulator should be chosen considering 10% deflection.

You must choose the smallest regulator assuring the necessary flow rate at related pressures.

Capacity and pressure loss table of the regulator can be seen in following table. Product should be chosen using the table.



Tablo-9 GR 60 and GR 30 Filter Regulator pressure Loss and Capacity Table (For natural gas)

In relation of pressure gradient between input and output pressure, maximum volume of flow indicates nominal diameter of regulator.

The operating point, identified over differential pressure (ΔP) and flow rate takes place at the left side of the nominal diameter that will be selected. That is the main criterion of choice.

Example of Regulator Choice:

Input pressure: P1: 50 mbar

Needed output pressure: P2: 20 mbar Necessary output flow rate: Q: 20 m³/h

Regarding the values given below; ΔP : 50-20: 30 mbar

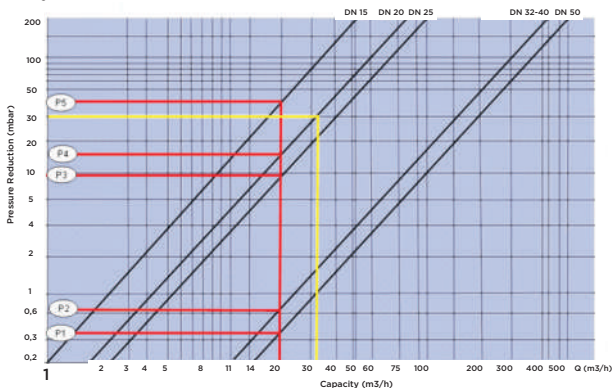
In Table-8 Draw a vertical line from the required flow rate point (20 m³/h) to the up and define the points that vertical line intersects the curves. Then draw horizontal lines from defined points to the left and specify pressure losses for various models. The regulator which includes the closest curve to 30 mbar should be chosen because it is the smallest regulator assures necessary flow rate. (Eventually the smallest regulator that makes real the condition, needed $\Delta P >$ regulator ΔP , should be chosen.)

As it is seen in the Table-9, while P1, P2, P3 and P4 points are lower than 30 mbar, P5 is higher than 30 mbar, so P5 should be out of choice. P4 should be chosen because it is the closest point to 30 mbar; therefore it is the smallest regulator that can assure the needed pressure. As it is seen in the Table-9 given below, GR60 804E and GR30.4 is the ideal model assuring needed flow rate, in consideration of having the closest pressure loss to 30 mbar (approximately 16 mbar)

After the choice of model, it is necessary to determine the suitable spring assures the needed output pressure 20 mbar for that model. GR60 Table - 2: GR30 Table - 3 indicates that GY-02 is ideal spring for T-GRE 804 and choice of regulator is completed.

GR60: TABLE-2, GR30: TABLE-3

NOTE: Besides Maximum flow rate in case ΔP is 30 mbar can be analyzed in terms of input and output pressure. Draw a horizontal line from 30 mbar point to the right and draw a vertical line from the point that horizontal line intersects the curve of chosen regulator model to downward. End of the vertical line indicates the Maximum flow rate that chosen regulator can have as ΔP is 30 mbar. As it is seen, Maximum flow rate is 32 m³/h for chosen regulator. Minimum flow rate is ten percent of Maximum flow rate, that is to say 32 x 0,1 3,2 m³/h.



Tablo-9 GR 60 ve GR 30 Example Choice Table

Flow Rate Conversion: Flow rate and flow rate capacity table given above is prepared for natural gas. In case of using the regulator with another gas, the said gas flow rate is found by flow rate conversion formula

Q1: $Q2 \times K$

Q1: The flow rate (m³/h)

Q2: The flow rate chosen from capacity table (m³/h)

K: Flow rate conversion constant (see Table-9)

Fluid Type	Relative Density of Gas (dv) (Kg /m ³)
Hydrogen	0,06
Hydrogen	0,45
Natural Gas	0,62
Carbon Monoxide	0,94
Nitrogen	0,97
Air	1
Oxygen	1,07
Lpg	1,56
Bütan	2,01

Tablo-10 Density of Gases

Fluid Type	RFlow Rate Transform Constant (K)
Hydrogen	3,04
Hydrogen	1,17
Carbon Monoxide	0,81
Nitrogen	0,80
Air	0,78
Oxygen	0,76
Lpg	0,63
Bütan	0,56

Tablo-11 Flow Rate conversion Constants

Changeover of Output Pressure and Spring: Remove the tap that is seen number 27, by rotating clock- wise. In case of regulation screw is screwed with an appropriate tool or screw driver in clockwise direction, output pressure starts to increase and when regulation screw is screwed in anti-clockwise direction, the output pressure starts to decrease. And so, output pressure can be changed. After the pressure is changed, assemble the tap back by rotating it clockwise and changeover of the output pressure is completed.

ATTENTION: Do not screw the regulation screw too tight, for the purpose of regulate the pressure to a value that exceeds the stated value on the label absolutely. In the contrary case output pressure can get irregular or product can get broken.

Changeover of Spring: If the needed output pressure can not be regulated by regulation spring, it is chosen from Table-2. Remove the regulation tap (27), regulation screw (29), regulation tap O-Ring (28), spring washer (30) and at the end the regulation pressure setting spring (31) respectively. Assemble the spring that is chosen from Table-2. Adjust the needed output pressure as said above and reassemble doing backward the same operation. After that unpack the label and put it under the regulator type label. Write the regulated output pressure on it legibly.

ATTENTION: Installation place of regulation spring should not be exposed to inflammable gas and inflammable gas-air mix.

6- MAINTENANCE-REPAIR

All maintenance, repair and cleaning work given below must be carried out qualified technicians. End users should not attempt to do maintenance, repair or cleaning work by themselves certainly. User or unqualified persons should not interfere in the event of any maintenance, repair or malfunction User is responsible to get product serviced and maintained periodically and make sure that it is working regularly. (It is recommended that not to be longer than 1 year) According to utilization conditions, device can be removed from the line for cleaning or maintenance work.

Before disassembling the device for maintenance or repair make sure that there is no pressured gas inside and this condition is secured to continue until the process is completed. Make sure overflow valve is off. To control or change diaphragm; remove funnel fixing screws (23) and remove big funnel. remove and control in order of, upper central pin nut (9), upper central pin washer (10), regulator diaphragm upper disc (7), regulator top diaphragm (5), regulator diaphragm bottom disc (8) and regulator bottom diaphragm (6) and then reinstall in order. pay attention to reinstall diaphragm rightly to its hole and place and not to turn outer diaphragm in order to screw upper central pin nut

GR60 To control filtering organ in the threaded body; remove flange-safety cap screws (19) seals and separate freed safety closing group from main body of regulator with out convulsing. Remove filtering organ (32) and clean it with soap and water, blow it with compressed air or change if it is necessary. Reassemble it in the body the way that settles its hole.

Reassemble the device doing backward the same operation and complete maintenance work. Install the device back to its place regarding the instructions.

Gr30: To check or substitute diaphragms; unscrew the funnel seal and remove the funnel; take off outer diaphragm; unscrew the central nut that fixes the working diaphragm. Reassemble doing backward the same operation, paying attention when tightening the nut not to turn diaphragms, stop the disc on the diaphragm with free hand.

To check the filtering organ on threaded body; unscrew the bottom cap seals and remove the bottom cover. Remove the filtering organ and clean it with soap and water, blow it with compressed air or substitute if it is necessary. Reassemble it in its original position. Reassemble the bottom being sure that central pin body is in centered in the bottom hole.

Before reinstall the regulator back to the line, use suitable gas-tightness components (Teflon band) absolutely. Check that the system is gas-tight after reinstallation, if it is necessary use soap suds. The method given below can be used for that.

Close input and output pipeline. Feed pressure to the regulator slowly. It should be; input pressure $\leq 1,5 \times$ Maximum Input Pressure and Output Pressure $\leq 1, 5 \times$ Maximum Output Pressure (see Table-2) Apply input pressure firstly and then apply output pressure.

ATTENTION: That order should be followed definitely; otherwise regulator can be broken down. In that method it is seen input pressure is bigger or equal to output pressure definitely. Afterwards bleed off output pressure initially and then bleed off input pressure.

ATTENTION: That order should be followed definitely otherwise regulator can be broken down.

In condition of the fluid flows through regulator is biogas, maintenance and function check should be done every six months.

In case of necessity, replacement parts like springs, diaphragms, O-Rings, filters etc. can be supplied from by our company. If the device falls out of use, contact our company to buy a new one.

For detailed technical information and any questions about replacement parts, authorized service and maintenance contact us.

7- POINTS TO CONSIDER AND WARNINGS

For all gas lines, it is advised to use our product in order to avoid arguments of the system from damage. In conditions of particularly critical installation (places not protected, lack of ventilation, lack of servicing) or especially in presence, close to the regulator, of potential sources of dangerous devices or inflammable materials during the normal working because suspicious to originate electric arcs or sparks, it is necessary to value the compatibility between the regulator and these devices before installation. In such cases the regulator can be dangerous as regards to the presence of potential initiator. In any case it is necessary to take any useful precaution to avoid that could be origin of areas O: (For example yearly periodical inspection of regular working, possibility to change emission degree of source or to attend on exhaust outside explosive material can be assured. To do so it is possible, to connect outside by a copper pipeline the threaded hole 1/4" (union) removing the brass anti dust cap)

Check that if product is damaged or lacking in necessary parts before installation. If any of these cases is seen, the delivery should be refused.

Before using the device, check the product label and the other information on the box. Check that the line pressure does not exceed the Maximum pressure stated on the label before installation. Before installation, check the compatibility between the device and system.

Working limits given in technical instructions should not be exceeded and do not pressurize the product more than maximum pressure.

The arrow on the body of regulator must be towards the end user before installation.

Be sure there is no gas inside the line and prevent any possibility to change that condition during installation.

Before installation, suitable stuffing content (Teflon band, external taper union etc.) should be used to provide gas-tightness and be sure system is gas-tight.

As analyzing the efficiency of device, be sure there is no gas leak from the connection point. Be sure that device is installed to the line correctly and connections are right too. Regulator should be installed regarding usage direction. Check that if the device is installed reverse. Do not install the regulator to vertical pipes unless it is necessary. In case of need, choose flows that go from top to bottom.

Install every armature regarding it will be removed for maintenance.

Use union, manometer or ball valve with the input and output of the regulator, because of disassembling possibility for maintenance. Also do not pump test air via outlet of regulator. Calibrate the device.

If the device threaded check that pipeline thread is not too long, over long threads may damage the body of device when screwed into place.

Regulation valves that can be fixed with the output and input of the regulator if required, should be turn on and off slowly. Regulation valves are not combined systems with regulator, it is recommended to be used. Tool during assembly and disassembly and carry out the process using connections.

Do not carry out welding or cutting unless inert gas is exerted on the gas facility. As analyzing the efficiency of device, be sure device is connected to the line tightly and there is no gas leak.

Do not come close to the regulator with inflammable and electrical materials.

Do not pump test air via outlet of regulator.

If you smell a gas leak, shut off the main input valve of regulator and contact authorized service. Meantime ventilate the atmosphere.

If it is necessary to disassemble the regulator from line for any reason, be sure that the pressure is shutdown.

ATTENTION: The packaged label in the regulator box is to write and stick the adjusted output pressure on the regulator.

8- MISUSAGES AND MALFUNCTIONS

If you experience any of malfunctions similar to given above, do not interfere and contact authorized service or our company.

If the line pressure exceeds the Maximum pressure stated in technical information, device could be broken down as a result of that high and uncontrollable pressure occurs at downstream of the regulator continuously. In the event that filter organ of the regulator is obstructed because of the dust carried over from the line, that defect causes to reduce the flow rate of the gas. In such a case, you should contact us for maintenance. If you suspect that there is a gas leak on the line, regulator is installed, contact us or authorized service urgently. (In such case, it can be realized from rising of output pressure even though regulation spring is stable or smell of gas in the atmosphere.)

If output pressure of the regulator rises permanently, it indicates that there is a malfunction about diaphragm system and the device is defected.

The regulator is defected if it makes noise or clutter.

As the regulator works under normal operating conditions perfectly at the line and user side, in case it does not supply the needed pressure value and can not regulate the pressure or it does not give any pressure, the device is defected.

If output pressure can not be regulated, device is broken down.

If regulator exceeds the output pressure that it is stated on its label, device is broken down. In such condition, regulation screw should be unscrewed in anti-clockwise direction. If it continues, spring should be removed and fix again. After all this if pressure still exceeds, device is broken down.

In a condition of the device makes measuring error, browse installation instruction and check that if installation is done correctly.

9-SHIPPING-DELIVERY

All of our products are packaged with special carton boxes to avoid any damages during delivery and shipping. Products should not be thrown, loaded too much weight on it, convulsed or put on wet surfaces. Our company takes responsibility for damages that occurs during shipping and delivery.

10- WARRANTY TERMS AND CONDITIONS

1- The warranty period is two years from date of delivery for processing errors.

2- The repairing period is maximum 30 working day.

3-Any defect that arises due to faulty materials or workmanship will be repaired free of charge within the warranty period.

4-Warranty does not cover damages because of not following the instructions in the manual. (Installing poorly, exceeding the limits given in technical instructions, misuse, neglecting etc.)

5-User is responsible to arrange compatibility between the system and product also to make conditions appropriate for installation. Our company disclaims any liability for defects because of said conditions. 6--Service and replacement parts are under warranty of our company.

7-Product life time stated by Ministry of Industry and Commerce is 10 years.

(Product should not be used out of the conditions given in the instruction manual. User is responsible for any defect that arises due to misuse.)

8- Product should not be used out of the conditions given in the instruction manual. User is responsible for any defect that arises due to misuse.)



**T.C.
SANAYİ VE TİCARET
BAKANLIĞI**
TÜKETİCİNİN VE
REKABETİN KORUNMASI
GENEL MÜDÜRLÜĞÜ



GARANTİ BELGESİ

Belgenin Yayımlı Tarihi ve Sayısı: 02.02.2011-08930
Belgenin Geçerlilik Tarihi: 02.02.2011

Bu belge için kullanıldığında, 4777 sayılı Tüketicinin Korunması Hakkında Kanun ve bu Kanuna dayalı olarak konulan Garanti Belgesi Uygulama Esaslarına Dair Yönetmelik uyarınca, T.C. Sanayi ve Ticaret Bakanlığı, Tüketici Haklarını Korunması Genel Müdürlüğü tarafından izin verilmiştir.

İmalatçı ve İthalatçı Firmasının

Çevre:	SİĞİRCİSARAYI
Adres:	KALDIRIMCILARI CİDDİ VE SATSILICI SİTİ
İletişim Adresi:	31 Ocak Bulvarı Çarşı Akşen Tünelinde Sokak No:4 06010 Kızılay/Beşiktaş
Telefon:	0312 296 24 00
Telefon:	0312 296 27 27
Marka:	DOĞALGAZREGÜLATÖRÜ
Çinsi:	TÜRK
Modeli:	--
Bandrol ve Seri No:	--
Teknik Talimat ve Yedek Parçaları:	--
Garanti Süresi:	2 YIL
Arızalı Ürünler Servisi:	7/24 Özgür
Satıcı Firmasının:	
Çevre:	
Adresi:	
Telefon:	
Telefon:	
Fatura Tarihi ve No:	--

İmza: TÜRKAN
Bakan a
GENEL MÜDÜR YARD.



Belgenin Değerlendirilmesi için sanayi.gov.tr Adresinden Kontrol Edilebilir.

11- SERVICE STATIONS

Contact service stations given below or our company, if you need detailed technical information or have problems about replacement parts or maintenance-repair

YETKİLİ SERVİS İSTASYONLARI							
Sıra No	Company Name	Address	Name of Authorized	Telephone / Fax	Tax Office and Tax Id Number	E mail	Service Scope
1	SMS Sanayi Malzemeleri Üretim ve Satışı A.Ş.	Yukarı Dudullu Bostancı Yolu, Kuru Sk. No:16 Ümraniye/İstanbul		Tel: 0 (216) 364 34 05 Fax: 0 (216) 364 37 57 GSM: 0 (530) 100 27 73	Sarıgazi 772 061 7587	torki@smstork.com	TS 12844 Yetkili Servisler Vanalar Kurallar

12-PRODUCING AND DEALER COMPANY INFORMATIONS

Company Name: SMS Sanayi Malzemeleri Üretim ve Satışı A.Ş.

Factory Address Çerkeşli OSB Mah. İMES 5. Cd. No:6 Dilovası İMES OSB Gebze/Kocaeli

Tel: 0262 290 20 20

Head Quarter Address Yukarı Dudullu Bostancı Yolu, Kuru Sk. No:16 Ümraniye/İstanbul

Tel: 0216 364 34 05

Web: www.smstork.com

e-mail: torki@smstork.com

ÖMER KAYA /GENEL MANAGER